

全体	投票率（男）	投票率（女）	投票率（計）
10代	44.15%	46.36%	45.22%
20代	29.37%	34.37%	31.72%
30代	39.44%	46.89%	42.91%
40代	49.70%	55.99%	52.68%
50代	60.70%	65.15%	62.87%
60代	70.70%	73.83%	72.27%
70代	73.67%	72.14%	72.86%
80以上	56.87%	38.27%	44.68%
全体	56.56%	56.73%	56.65%

水沢	投票率（男）	投票率（女）	投票率（計）
10代	39.71%	44.42%	42.02%
20代	27.41%	32.07%	29.63%
30代	37.00%	43.71%	40.21%
40代	47.21%	53.21%	50.09%
50代	57.92%	62.23%	60.04%
60代	67.74%	70.30%	69.04%
70代	71.86%	70.92%	71.34%
80以上	57.10%	41.59%	46.97%
全体	53.36%	55.09%	54.26%

江刺	投票率（男）	投票率（女）	投票率（計）
10代	41.95%	40.29%	41.12%
20代	27.20%	35.38%	31.00%
30代	39.34%	47.60%	43.03%
40代	48.20%	54.49%	51.07%
50代	61.86%	66.51%	64.13%
60代	70.45%	74.26%	72.31%
70代	73.08%	71.39%	72.23%
80以上	55.96%	34.67%	42.03%
全体	56.61%	55.60%	56.10%

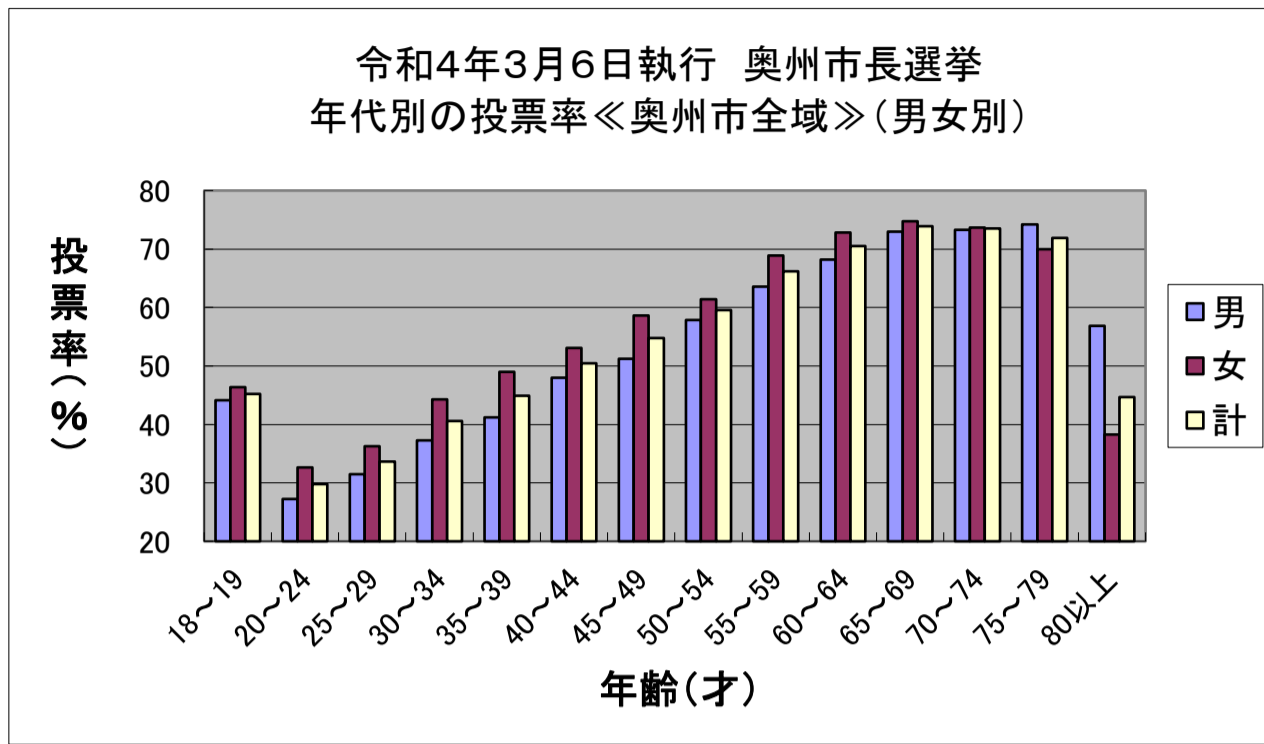
前沢	投票率（男）	投票率（女）	投票率（計）
10代	57.98%	57.43%	57.73%
20代	38.88%	38.62%	38.75%
30代	44.24%	53.52%	48.51%
40代	56.78%	62.52%	59.59%
50代	64.42%	71.68%	67.92%
60代	76.04%	79.72%	77.83%
70代	80.08%	79.72%	79.90%
80以上	62.07%	41.50%	48.71%
全体	63.72%	62.88%	63.28%

胆沢	投票率（男）	投票率（女）	投票率（計）
10代	46.62%	57.50%	51.78%
20代	33.82%	38.98%	36.22%
30代	43.54%	51.07%	47.10%
40代	53.77%	60.91%	57.09%
50代	64.37%	68.30%	66.26%
60代	73.62%	77.07%	75.38%
70代	73.99%	70.02%	71.95%
80以上	51.94%	32.42%	38.99%
全体	59.60%	57.84%	58.69%

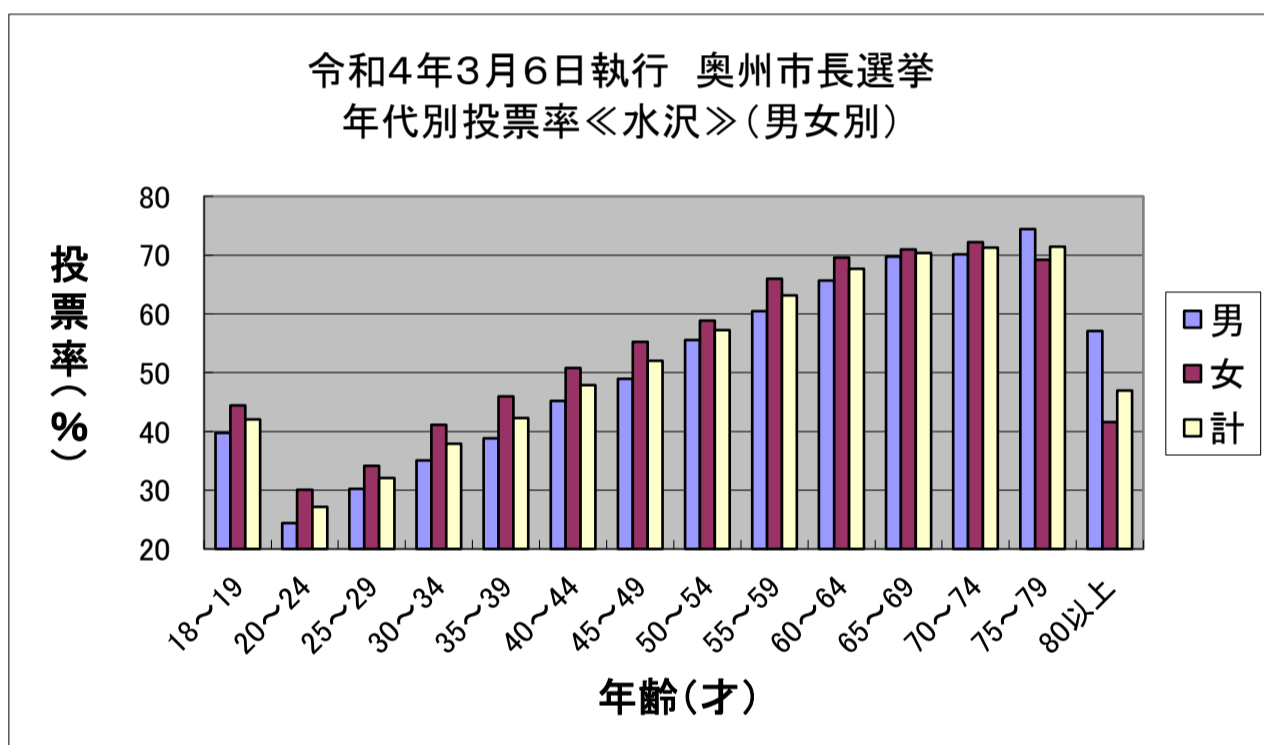
衣川	投票率（男）	投票率（女）	投票率（計）
10代	62.50%	31.82%	50.00%
20代	34.13%	42.19%	36.84%
30代	47.93%	59.35%	52.74%
40代	63.38%	73.02%	67.91%
50代	72.02%	70.37%	71.20%
60代	77.31%	80.74%	79.08%
70代	75.59%	76.28%	75.92%
80以上	61.50%	38.84%	46.35%
全体	65.58%	63.47%	64.50%

# 令和4年3月6日執行 奥州市長選挙 年代別投票率(奥州市) 5才刻み

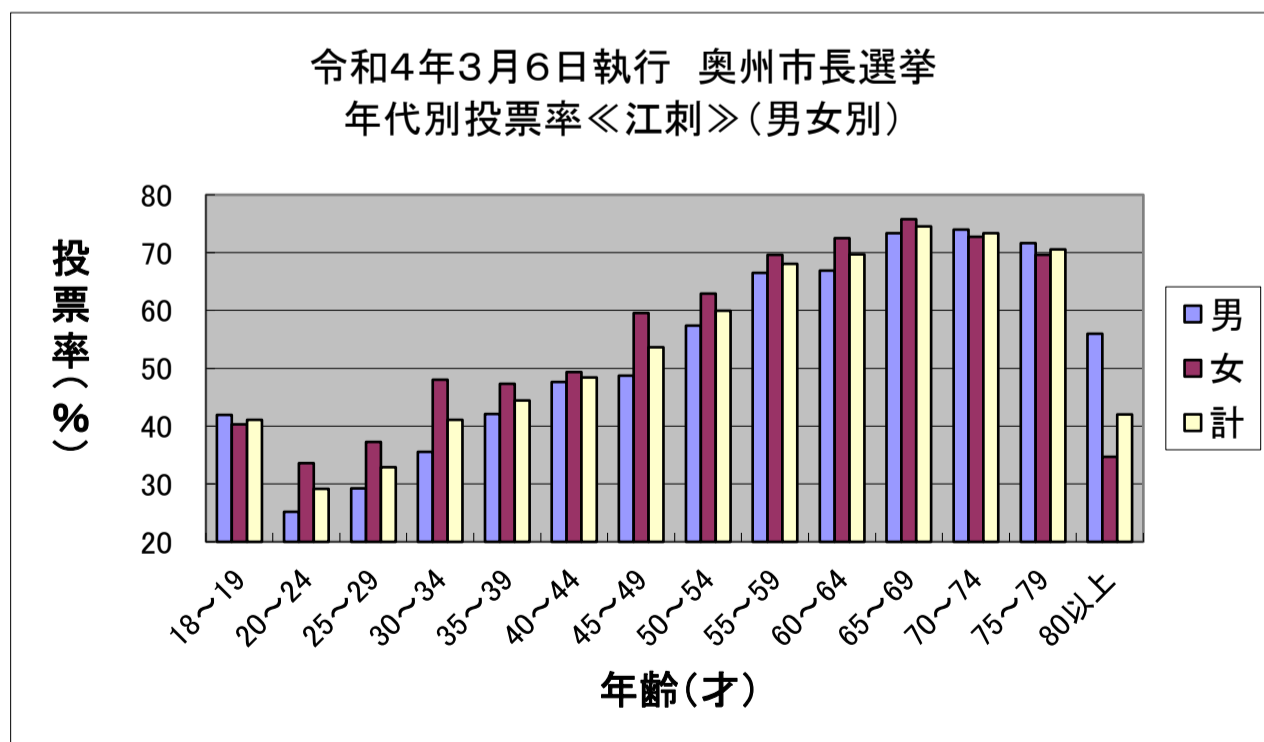
奥州市全域	投票率(%)		
	年齢(才)	男	女
18~19	44.15	46.36	45.22
20~24	27.23	32.62	29.81
25~29	31.48	36.24	33.67
30~34	37.30	44.30	40.54
35~39	41.22	49.00	44.86
40~44	48.00	53.10	50.42
45~49	51.25	58.60	54.74
50~54	57.88	61.37	59.58
55~59	63.54	68.91	66.17
60~64	68.16	72.82	70.49
65~69	72.98	74.74	73.86
70~74	73.32	73.70	73.52
75~79	74.23	69.99	71.88
80以上	56.87	38.27	44.68
計	<b>56.56</b>	<b>56.73</b>	<b>56.65</b>



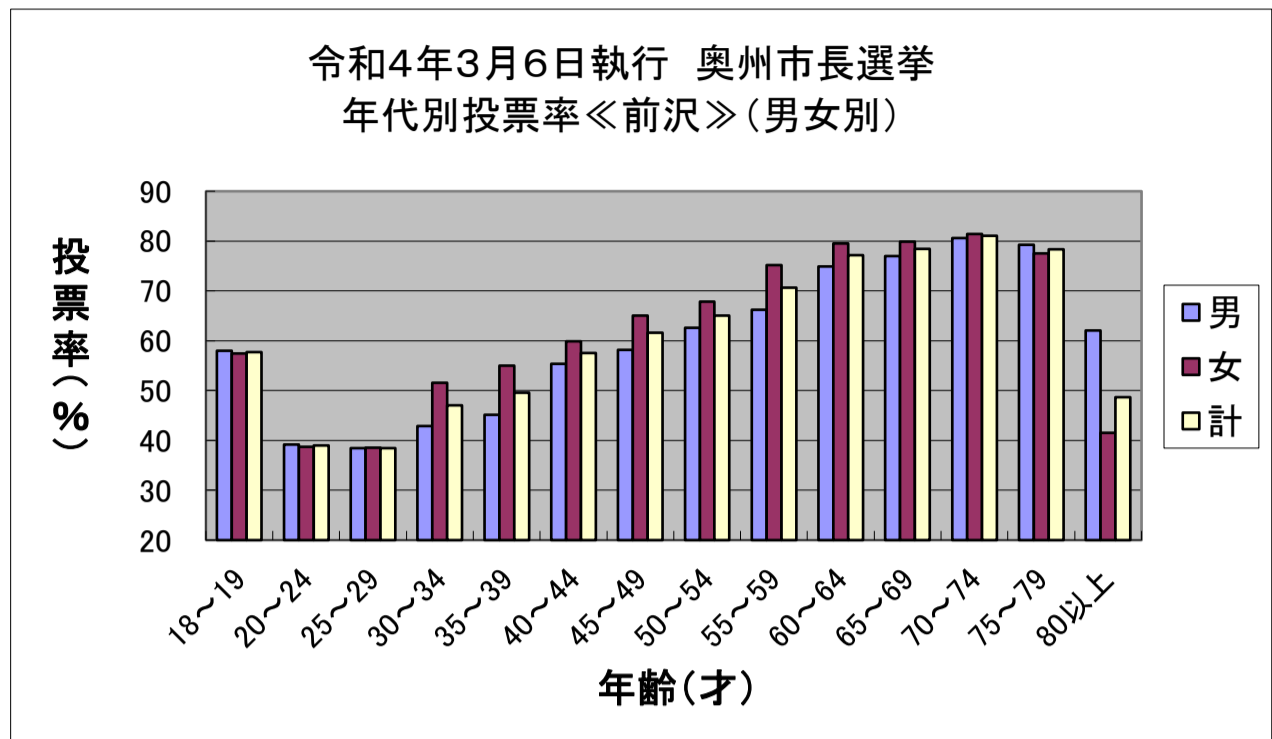
水沢	投票率(%)		
	年齢(才)	男	女
18~19	39.71	44.42	42.02
20~24	24.40	30.06	27.16
25~29	30.24	34.13	32.05
30~34	35.05	41.16	37.92
35~39	38.79	45.94	42.24
40~44	45.21	50.81	47.88
45~49	48.98	55.26	52.03
50~54	55.56	58.88	57.21
55~59	60.43	65.95	63.11
60~64	65.71	69.57	67.64
65~69	69.70	70.97	70.35
70~74	70.15	72.20	71.27
75~79	74.45	69.20	71.44
80以上	57.10	41.59	46.97



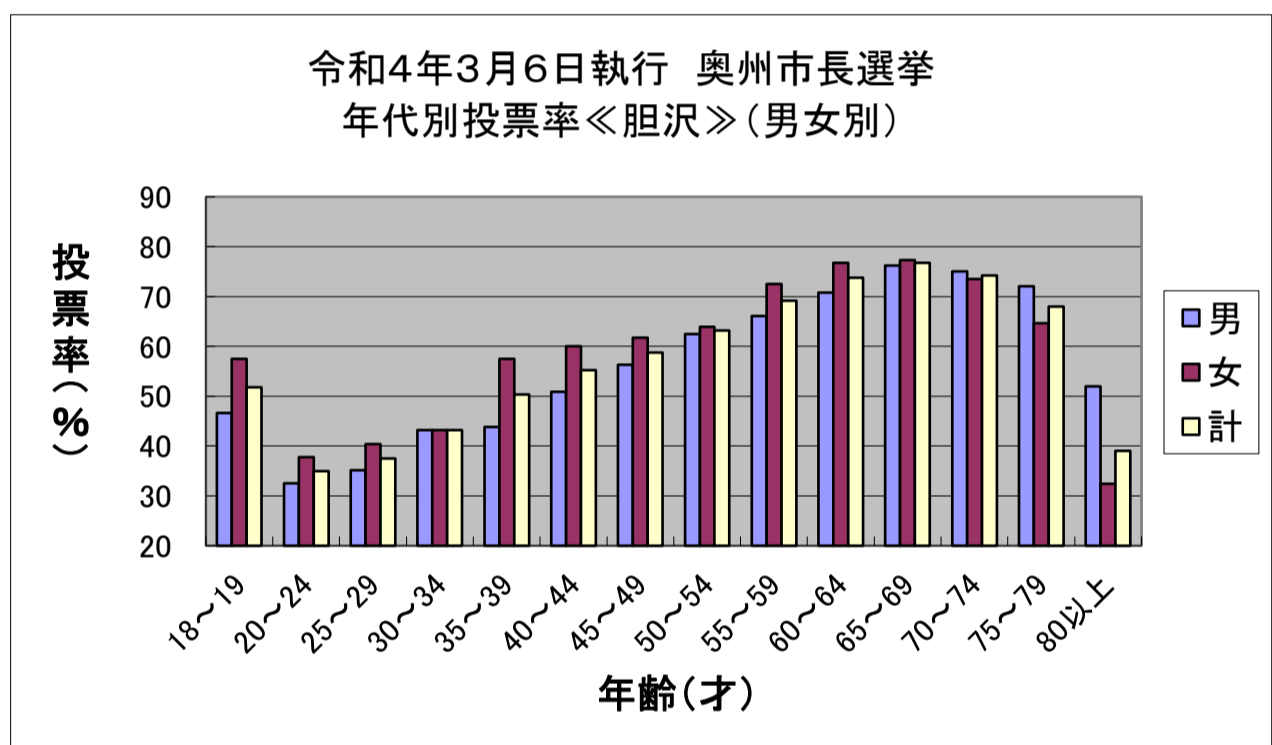
江刺	投票率(%)		
	年齢(才)	男	女
18~19	41.95	40.29	41.12
20~24	25.16	33.64	29.18
25~29	29.26	37.28	32.91
30~34	35.54	47.99	41.09
35~39	42.11	47.32	44.44
40~44	47.60	49.32	48.40
45~49	48.76	59.57	53.61
50~54	57.36	62.91	59.95
55~59	66.49	69.61	68.08
60~64	66.90	72.51	69.67
65~69	73.39	75.75	74.54
70~74	73.95	72.74	73.37
75~79	71.62	69.58	70.53
80以上	55.96	34.67	42.03



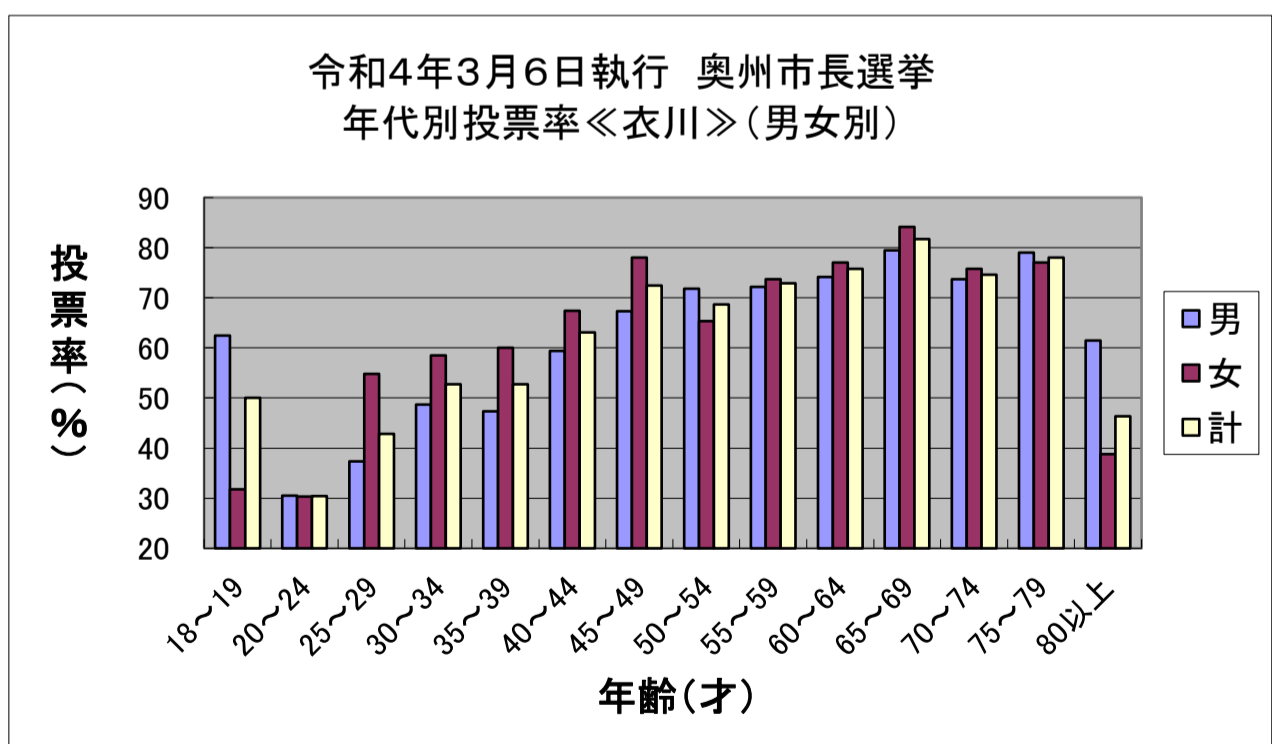
前沢	投票率(%)		
	男	女	計
18~19	57.98	57.43	57.73
20~24	39.21	38.73	38.98
25~29	38.46	38.51	38.48
30~34	42.91	51.58	47.01
35~39	45.17	54.98	49.61
40~44	55.39	59.89	57.57
45~49	58.21	65.09	61.61
50~54	62.57	67.87	65.09
55~59	66.22	75.21	70.61
60~64	74.95	79.50	77.19
65~69	76.98	79.92	78.40
70~74	80.65	81.39	81.02
75~79	79.27	77.52	78.35
80以上	62.07	41.50	48.71



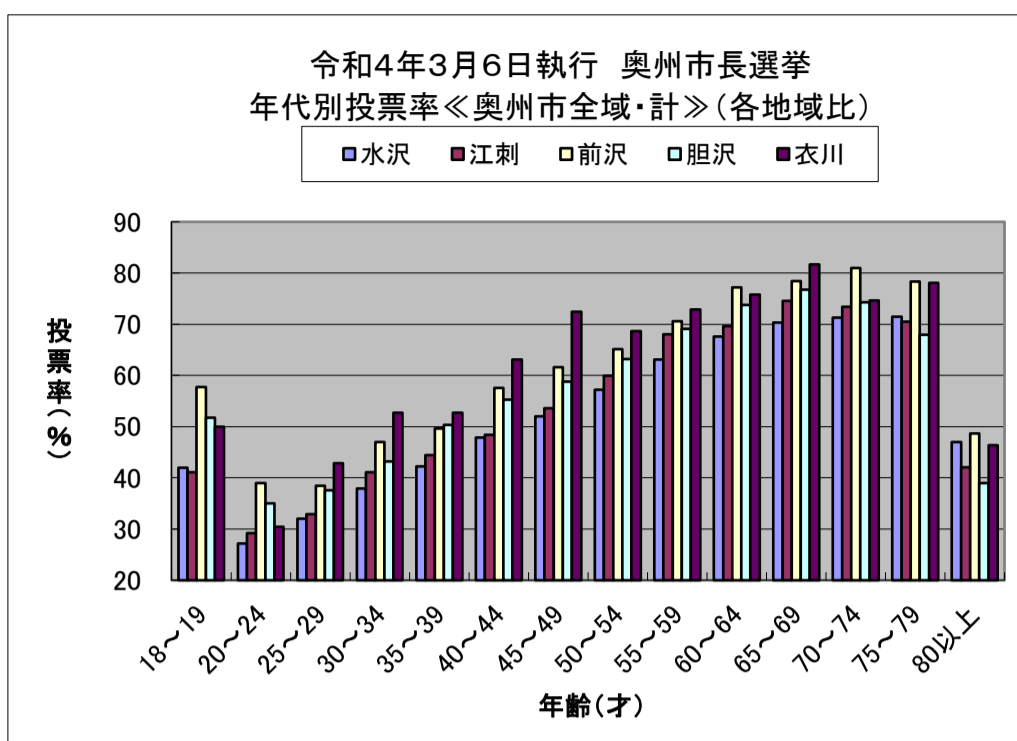
胆沢	投票率(%)		
	男	女	計
18~19	46.62	57.50	51.78
20~24	32.50	37.73	35.00
25~29	35.17	40.41	37.53
30~34	43.23	43.22	43.22
35~39	43.80	57.53	50.36
40~44	50.90	60.05	55.24
45~49	56.27	61.72	58.77
50~54	62.50	63.94	63.20
55~59	66.07	72.48	69.12
60~64	70.80	76.79	73.78
65~69	76.23	77.32	76.80
70~74	75.04	73.47	74.26
75~79	72.01	64.61	67.99
80以上	51.94	32.42	38.99



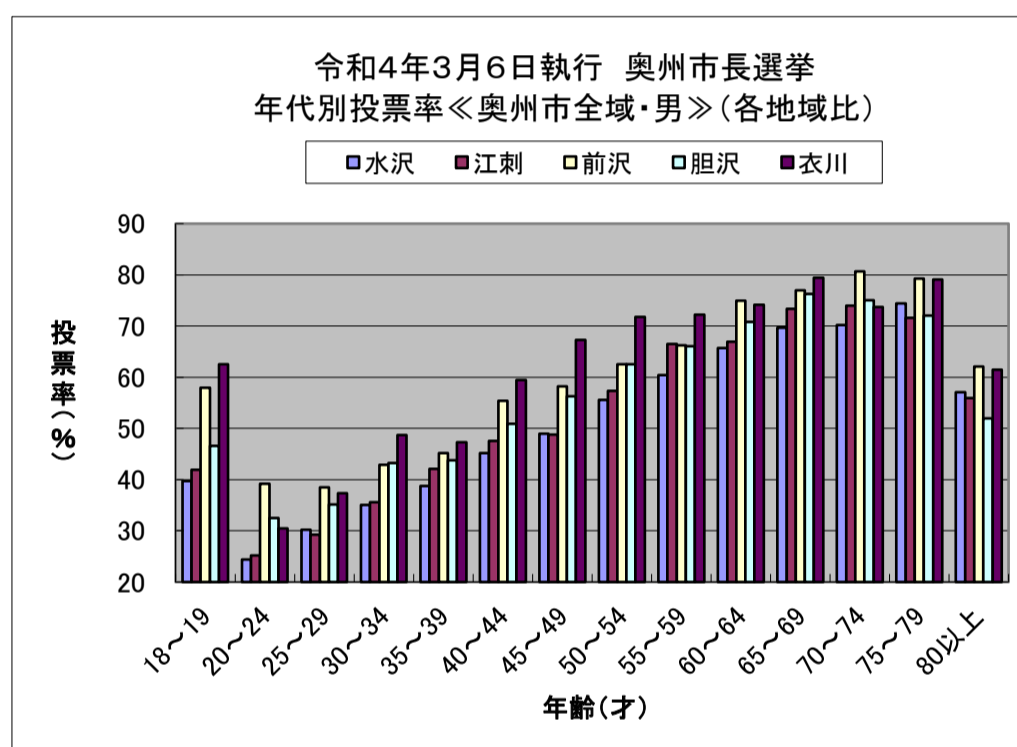
衣川	投票率(%)		
	男	女	計
18~19	62.50	31.82	50.00
20~24	30.51	30.30	30.43
25~29	37.31	54.84	42.86
30~34	48.68	58.49	52.71
35~39	47.31	60.00	52.76
40~44	59.43	67.42	63.08
45~49	67.29	78.00	72.46
50~54	71.79	65.33	68.63
55~59	72.17	73.68	72.93
60~64	74.13	77.05	75.77
65~69	79.44	84.18	81.71
70~74	73.68	75.76	74.65
75~79	79.05	77.06	78.04
80以上	61.50	38.84	46.35



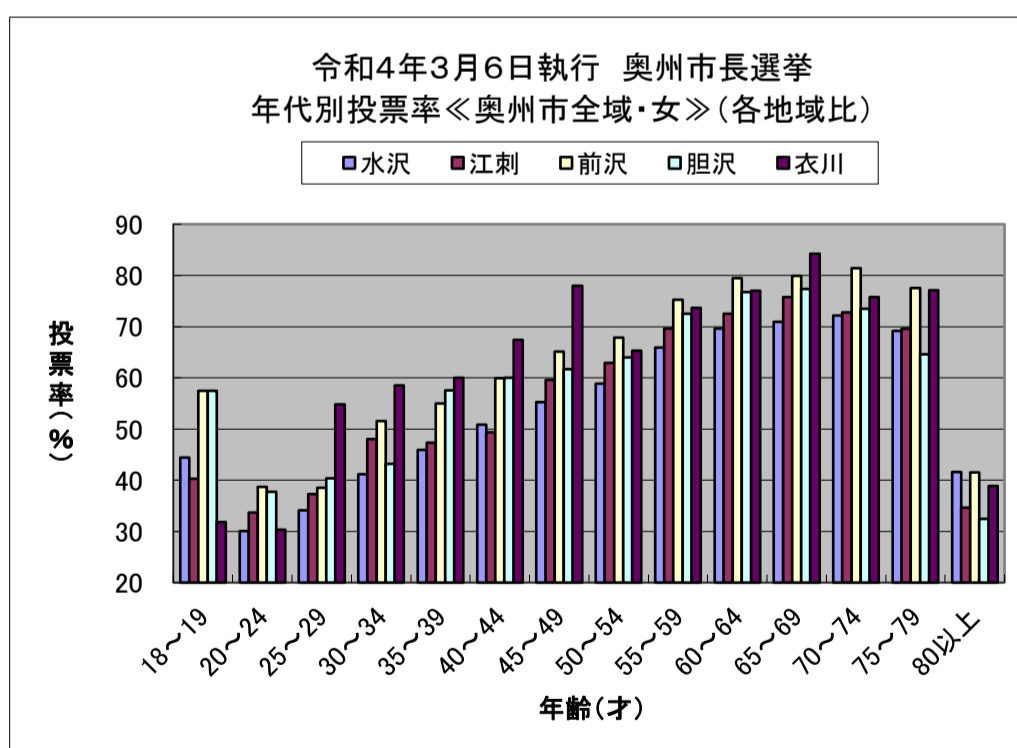
奥州市全域		投票率(%)					
年齢(才)	水沢	江刺	前沢	胆沢	衣川	計	
18~19	42.02	41.12	57.73	51.78	50.00	45.22	
20~24	27.16	29.18	38.98	35.00	30.43	29.81	
25~29	32.05	32.91	38.48	37.53	42.86	33.67	
30~34	37.92	41.09	47.01	43.22	52.71	40.54	
35~39	42.24	44.44	49.61	50.36	52.76	44.86	
40~44	47.88	48.40	57.57	55.24	63.08	50.42	
45~49	52.03	53.61	61.61	58.77	72.46	54.74	
50~54	57.21	59.95	65.09	63.20	68.63	59.58	
55~59	63.11	68.08	70.61	69.12	72.93	66.17	
60~64	67.64	69.67	77.19	73.78	75.77	70.49	
65~69	70.35	74.54	78.40	76.80	81.71	73.86	
70~74	71.27	73.37	81.02	74.26	74.65	73.52	
75~79	71.44	70.53	78.35	67.99	78.04	71.88	
80以上	46.97	42.03	48.71	38.99	46.35	44.68	
計						56.65	



男		投票率(%)					
年齢(才)	水沢	江刺	前沢	胆沢	衣川	計	
18~19	39.71	41.95	57.98	46.62	62.50	44.15	
20~24	24.40	25.16	39.21	32.50	30.51	27.23	
25~29	30.24	29.26	38.46	35.17	37.31	31.48	
30~34	35.05	35.54	42.91	43.23	48.68	37.30	
35~39	38.79	42.11	45.17	43.80	47.31	41.22	
40~44	45.21	47.60	55.39	50.90	59.43	48.00	
45~49	48.98	48.76	58.21	56.27	67.29	51.25	
50~54	55.56	57.36	62.57	62.50	71.79	57.88	
55~59	60.43	66.49	66.22	66.07	72.17	63.54	
60~64	65.71	66.90	74.95	70.80	74.13	68.16	
65~69	69.70	73.39	76.98	76.23	79.44	72.98	
70~74	70.15	73.95	80.65	75.04	73.68	73.32	
75~79	74.45	71.62	79.27	72.01	79.05	74.23	
80以上	57.10	55.96	62.07	51.94	61.50	56.87	
計						56.56	



女		投票率(%)					
年齢(才)	水沢	江刺	前沢	胆沢	衣川	計	
18~19	44.42	40.29	57.43	57.50	31.82	46.36	
20~24	30.06	33.64	38.73	37.73	30.30	32.62	
25~29	34.13	37.28	38.51	40.41	54.84	36.24	
30~34	41.16	47.99	51.58	43.22	58.49	44.30	
35~39	45.94	47.32	54.98	57.53	60.00	49.00	
40~44	50.81	49.32	59.89	60.05	67.42	53.10	
45~49	55.26	59.57	65.09	61.72	78.00	58.60	
50~54	58.88	62.91	67.87	63.94	65.33	61.37	
55~59	65.95	69.61	75.21	72.48	73.68	68.91	
60~64	69.57	72.51	79.50	76.79	77.05	72.82	
65~69	70.97	75.75	79.92	77.32	84.18	74.74	
70~74	72.20	72.74	81.39	73.47	75.76	73.70	
75~79	69.20	69.58	77.52	64.61	77.06	69.99	
80以上	41.59	34.67	41.50	32.42	38.84	38.27	
計						56.73	



年代別投票率比較

(単位:%)

奥州市全域	H28.7.10参院選			H29.10.22衆院選			H30.3.4市長市議選			R元.7.21参院選			R元.9.8知事県議選			R3.10.31衆院選			R4.3.6市長選		
年代	男	女	計	男	女	計	男	女	計	男	女	計	男	女	計	男	女	計	男	女	計
18～19	42.25	45.88	44.03	46.91	50.42	48.68	47.32	49.73	48.53	36.49	37.01	36.74	43.26	44.92	44.06	48.14	48.64	48.39	44.15	46.36	45.22
20～24	32.47	37.56	34.96	33.13	36.92	34.94	30.93	35.90	33.31	29.93	32.85	31.31	27.74	35.29	31.30	35.65	39.89	37.67	27.23	32.62	29.81
25～29	39.36	43.83	41.46	39.07	46.30	42.47	36.03	43.24	39.45	37.96	43.54	40.57	34.21	44.05	38.84	42.37	47.74	44.85	31.48	36.24	33.67
30～34	41.60	45.77	43.55	45.55	49.09	47.19	43.75	50.04	46.67	43.51	45.48	44.43	42.02	46.79	44.23	48.34	53.83	50.89	37.30	44.30	40.54
35～39	47.82	51.24	49.45	48.81	50.35	49.55	49.93	53.27	51.53	46.32	47.57	46.91	44.59	48.50	46.44	51.11	56.02	53.41	41.22	49.00	44.86
40～44	53.33	54.78	54.02	55.95	58.10	56.97	55.58	60.92	58.12	51.31	51.42	51.36	51.07	54.98	52.93	56.37	61.01	58.56	48.00	53.10	50.42
45～49	62.24	62.89	62.56	62.31	63.78	63.02	61.15	64.24	62.64	56.05	58.36	57.13	56.56	60.04	58.19	61.69	63.60	62.59	51.25	58.60	54.74
50～54	68.15	69.44	68.79	68.99	72.19	70.57	66.75	71.67	69.18	64.43	66.32	65.36	65.17	68.07	66.60	69.19	69.34	69.26	57.88	61.37	59.58
55～59	71.94	72.94	72.44	72.36	74.53	73.43	73.64	76.40	75.02	68.37	69.83	69.09	69.20	72.71	70.95	73.59	76.17	74.86	63.54	68.91	66.17
60～64	74.61	74.71	74.66	76.02	76.01	76.01	77.75	80.60	79.16	71.69	72.91	72.29	72.95	76.47	74.69	76.27	77.92	77.09	68.16	72.82	70.49
65～69	78.74	76.79	77.76	78.02	77.88	77.95	80.92	81.85	81.39	73.93	74.65	74.29	76.72	78.33	77.52	78.17	78.21	78.19	72.98	74.74	73.86
70～74	81.34	75.83	78.34	81.13	77.64	79.28	83.16	83.17	83.17	75.90	73.28	74.53	78.74	78.50	78.62	79.53	77.92	78.70	73.32	73.70	73.52
75～79	78.58	69.22	73.13	77.47	71.04	73.75	81.75	78.09	79.63	75.46	69.05	71.80	79.09	75.30	76.92	79.29	73.55	76.08	74.23	69.99	71.88
80以上	62.94	39.32	47.31	61.88	40.94	48.10	66.65	47.55	54.10	58.09	37.73	44.74	62.60	42.89	49.68	63.28	42.74	49.82	56.87	38.27	44.68
奥州市全域計	62.41	59.28	60.78	63.22	60.89	62.01	64.25	64.20	64.23	59.45	56.79	58.07	60.77	60.52	60.64	64.70	62.44	63.53	56.56	56.73	56.65
水 沢	男	女	計	男	女	計	男	女	計	男	女	計	男	女	計	男	女	計	男	女	計
18～19	39.63	44.13	41.88	44.11	47.96	46.08	44.3	44.44	44.37	34.09	38.42	36.25	40.20	41.30	40.75	45.79	44.87	45.33	39.71	44.42	42.02
20～24	29.25	33.50	31.32	31.75	34.57	33.08	28.55	30.45	29.46	28.90	30.41	29.62	25.67	30.63	28.04	34.75	39.02	36.84	24.40	30.06	27.16
25～29	38.08	40.78	39.38	36.15	42.07	38.98	30.52	37.86	34.08	38.16	41.43	39.73	30.76	39.41	34.90	39.87	46.15	42.82	30.24	34.13	32.05
30～34	39.37	43.86	41.55	43.14	44.90	43.99	39.69	44.34	41.92	42.40	43.52	42.94	38.27	42.63	40.35	48.12	51.34	49.64	35.05	41.16	37.92
35～39	46.81	48.57	47.66	46.47	47.82	47.12	44.55	46.49	45.48	45.07	44.75	44.92	41.75	43.54	42.62	49.14	53.07	51.04	38.79	45.94	42.24
40～44	51.94	50.41	51.20	53.89	55.64	54.74	51.03	54.97	52.95	49.54	48.04	48.82	45.45	48.65	46.97	54.58	57.34	55.90	45.21	50.81	47.88
45～49	60.12	59.43	59.78	60.62	59.64	60.13	56.66	58.30	57.47	54.91	54.86	54.89	52.81	54.93	53.84	59.37	60.20	59.77	48.98	55.26	52.03
50～54	65.99	65.73	65.86	66.63	68.93	67.76	60.90	65.49	63.17	62.84	62.61	62.72	61.82	62.70	62.26	68.90	66.63	67.77	55.56	58.88	57.21
55～59	71.20	71.52	71.36	71.05	72.23	71.63	68.09	69.57	68.83	67.44	67.94	67.69	66.82	68.02	67.41	71.44	74.44	72.89	60.43	65.95	63.11
60～64	73.42	72.84	73.12	75.80	73.53	74.65	73.07	74.10	73.59	71.20	71.31	71.26	69.02	71.04	70.03	75.51	75.66	75.59	65.71	69.57	67.64
65～69	77.87	76.24	76.99	76.89	77.46	77.19	74.98	77.57	76.36	73.92	73.58	73.74	73.13	74.97	74.08	77.47	75.85	76.63	69.70	70.97	70.35
70～74	82.57	78.02	80.05	81.32	78.27	79.64	79.42	80.19	79.84	74.99	74.82	74.90	75.56	76.88	76.29	78.22	77.39	77.76	70.15	72.20	71.27
75～79	78.21	73.28	75.35	78.08	73.25	75.24	79.88	76.02	77.61	78.81	71.32	74.48	79.88	74.42	76.72	79.26	75.04	76.85	74.45	69.20	71.44
80以上	67.05	44.21	51.90	65.25	44.59	51.62	66.83	47.00	53.75	60.49	41.16	47.68	62.82	43.34	49.90	64.77	46.73	52.96	57.10	41.59	46.97
水 沢 計	60.71	58.78	59.69	61.33	59.92	60.59	59.04	59.59	59.33	58.18	56.10	57.09	56.86	57.02	56.95	62.84	61.54	62.16	53.36	55.09	54.26

年代別投票率比較

(単位:%)

奥州市全域	H28.7.10参院選			H29.10.22衆院選			H30.3.4市長市議選			R元.7.21参院選			R元.9.8知事県議選			R3.10.31衆院選			R4.3.6市長選		
江 刺	男	女	計	男	女	計	男	女	計	男	女	計	男	女	計	男	女	計	男	女	計
18～19	46.09	43.46	44.83	52.87	55.02	53.91	49.6	56.02	52.74	35.29	35.63	35.45	42.02	44.60	43.24	45.23	46.86	46.06	41.95	40.29	41.12
20～24	37.75	41.06	39.39	34.65	37.66	36.11	31.54	41.30	36.30	32.28	36.89	34.45	29.76	43.16	35.88	31.14	37.91	34.26	25.16	33.64	29.18
25～29	38.60	47.28	42.41	41.21	52.39	46.20	39.05	49.78	43.82	36.94	47.28	41.60	32.66	45.34	38.40	44.35	48.25	46.11	29.26	37.28	32.91
30～34	42.03	45.14	43.44	50.65	53.87	52.06	48.46	56.86	52.19	43.57	49.23	46.14	42.55	48.16	45.09	45.11	57.29	50.51	35.54	47.99	41.09
35～39	47.48	53.90	50.46	47.63	51.19	49.31	52.55	58.12	55.19	46.54	48.23	47.31	46.03	49.35	47.56	53.19	58.31	55.50	42.11	47.32	44.44
40～44	53.37	56.94	54.98	56.18	59.77	57.81	56.85	64.79	60.48	52.31	54.14	53.17	54.92	59.60	57.09	56.40	62.30	59.12	47.60	49.32	48.40
45～49	63.12	66.76	64.84	63.64	69.25	66.19	63.27	68.91	65.78	54.90	63.30	58.53	55.63	64.82	59.58	61.36	64.04	62.55	48.76	59.57	53.61
50～54	70.99	71.74	71.37	72.82	75.25	74.05	72.76	76.99	74.89	67.72	69.77	68.74	66.49	72.40	69.42	69.65	72.18	70.85	57.36	62.91	59.95
55～59	71.76	72.51	72.12	73.25	76.06	74.61	77.02	80.95	78.95	70.99	72.31	71.64	69.96	73.37	71.65	76.94	76.32	76.63	66.49	69.61	68.08
60～64	75.43	74.85	75.15	74.85	77.95	76.36	81.09	85.36	83.14	71.86	72.83	72.33	73.59	78.22	75.83	75.93	78.83	77.37	66.90	72.51	69.67
65～69	78.44	75.36	77.01	79.05	76.08	77.66	85.50	84.95	85.23	75.66	75.39	75.53	77.52	78.95	78.21	77.99	78.64	78.30	73.39	75.75	74.54
70～74	80.63	72.21	76.16	81.08	77.73	79.36	85.56	85.29	85.42	75.90	71.88	73.97	78.91	78.04	78.49	79.81	78.34	79.10	73.95	72.74	73.37
75～79	78.93	64.70	70.65	76.20	67.30	71.16	81.73	77.27	79.21	72.96	67.41	69.88	75.79	73.12	74.31	78.63	72.99	75.56	71.62	69.58	70.53
80以上	59.81	36.35	44.33	58.85	38.67	45.65	64.99	46.86	53.17	56.25	36.03	43.11	59.79	40.88	47.52	61.64	39.53	47.19	55.96	34.67	42.03
江刺 計	63.20	58.36	60.72	64.34	61.09	62.68	67.41	67.04	67.22	60.31	57.25	58.76	61.55	61.18	61.36	65.01	61.97	63.46	56.61	55.60	56.10
前 沢	男	女	計	男	女	計	男	女	計	男	女	計	男	女	計	男	女	計	男	女	計
18～19	42.72	51.26	47.30	53.33	50.00	51.60	51.92	58.12	55.2	47.86	33.33	40.69	54.46	56.70	55.50	61.54	60.82	61.21	57.98	57.43	57.73
20～24	39.15	40.83	39.96	35.32	44.10	39.82	33.02	41.23	37.27	30.15	36.77	33.65	31.18	44.33	38.05	45.50	45.00	45.26	39.21	38.73	38.98
25～29	39.85	48.76	44.09	40.86	50.00	45.05	43.25	43.24	43.25	39.00	42.51	40.63	49.12	57.43	53.02	50.79	51.89	51.33	38.46	38.51	38.48
30～34	46.68	53.40	49.63	43.10	52.99	47.35	42.77	55.06	48.18	43.91	43.10	43.56	49.36	52.81	50.83	52.55	59.73	55.88	42.91	51.58	47.01
35～39	50.66	53.04	51.82	57.14	53.53	55.35	61.02	62.81	61.90	47.88	54.17	50.84	48.92	59.88	54.12	52.79	61.20	56.62	45.17	54.98	49.61
40～44	54.69	63.27	59.02	62.14	62.86	62.48	63.55	71.58	67.36	57.44	60.05	58.71	61.44	66.04	63.68	61.73	68.90	65.23	55.39	59.89	57.57
45～49	64.43	66.57	65.40	63.46	70.23	66.76	67.57	71.43	69.46	57.10	64.27	60.69	64.09	71.67	67.83	68.35	72.97	70.62	58.21	65.09	61.61
50～54	67.90	75.84	71.92	69.45	75.07	72.15	73.24	80.00	76.50	65.82	71.90	68.60	74.48	76.67	75.49	69.33	76.06	72.42	62.57	67.87	65.09
55～59	70.60	76.91	73.65	73.20	77.25	75.18	76.50	83.15	79.81	64.19	71.13	67.64	73.47	81.99	77.71	71.98	80.95	76.55	66.22	75.21	70.61
60～64	76.40	77.99	77.17	79.54	81.44	80.46	79.90	85.21	82.41	72.91	77.69	75.21	78.78	87.79	83.12	77.10	80.68	78.82	74.95	79.50	77.19
65～69	81.61	82.27	81.93	81.05	80.85	80.95	86.49	85.62	86.06	75.41	77.08	76.22	81.59	83.30	82.42	79.29	83.02	81.11	76.98	79.92	78.40
70～74	83.85	76.89	80.02	83.96	79.66	81.70	89.02	87.84	88.39	77.90	74.34	76.05	85.84	86.65	86.25	81.96	82.14	82.05	80.65	81.39	81.02
75～79	80.91	67.20	73.05	81.64	73.36	76.97	88.61	84.21	86.11	73.02	67.08	69.67	85.05	81.17	82.83	81.32	75.51	78.14	79.27	77.52	78.35
80以上	62.35	40.59	47.95	65.38	43.16	50.71	72.22	52.73	59.41	60.00	38.86	46.29	68.97	49.75	56.58	67.44	44.74	52.69	62.07	41.50	48.71
前沢 計	65.05	62.66	63.80	67.01	64.23	65.56	70.69	70.25	70.46	61.76	59.43	60.55	68.88	69.39	69.14	68.88	67.15	67.99	63.72	62.88	63.28

年代別投票率比較

(単位:%)

奥州市全域	H28.7.10参院選			H29.10.22衆院選			H30.3.4市長市議選			R元.7.21参院選			R元.9.8知事県議選			R3.10.31衆院選			R4.3.6市長選		
胆 沢	男	女	計	男	女	計	男	女	計	男	女	計	男	女	計	男	女	計	男	女	計
18～19	46.58	50.41	48.33	44.44	56.59	50.59	50.36	52.55	51.46	35.04	37.86	36.46	48.06	51.72	49.80	46.15	57.50	51.60	46.62	57.50	51.78
20～24	32.77	45.95	39.36	36.61	38.38	37.46	38.01	41.20	39.48	31.29	34.04	32.55	31.58	35.45	33.33	40.56	42.73	41.60	32.50	37.73	35.00
25～29	43.95	45.51	44.69	45.30	50.75	47.92	44.93	52.77	48.81	39.22	46.88	42.86	41.73	51.01	46.20	44.72	52.88	48.46	35.17	40.41	37.53
30～34	44.39	46.79	45.48	46.58	54.94	50.51	49.32	57.64	53.16	46.36	46.91	46.62	49.11	56.95	52.82	53.05	53.00	53.03	43.23	43.22	43.22
35～39	49.67	56.29	52.87	52.64	56.33	54.38	54.23	60.80	57.30	48.85	50.69	49.69	48.97	57.58	52.88	52.02	59.57	55.57	43.80	57.53	50.36
40～44	57.76	61.01	59.26	58.57	61.28	59.83	64.27	68.75	66.39	52.59	52.39	52.49	59.39	61.50	60.42	59.47	65.52	62.34	50.90	60.05	55.24
45～49	66.43	67.72	67.04	64.98	68.05	66.42	69.49	75.13	72.20	62.13	59.85	61.08	67.72	64.82	66.40	65.77	67.95	66.77	56.27	61.72	58.77
50～54	70.11	72.71	71.37	69.84	76.27	72.92	72.20	78.74	75.28	64.97	70.28	67.48	68.84	77.11	72.72	70.02	71.32	70.65	62.50	63.94	63.20
55～59	74.43	76.17	75.30	73.31	77.52	75.40	81.06	82.51	81.79	69.92	72.39	71.16	73.49	80.75	77.16	76.79	78.74	77.74	66.07	72.48	69.12
60～64	76.02	76.81	76.41	77.00	76.96	76.98	81.42	85.99	83.68	70.94	74.60	72.79	76.55	81.04	78.80	76.60	82.73	79.62	70.80	76.79	73.78
65～69	80.22	77.14	78.72	78.61	80.11	79.35	85.89	86.97	86.43	72.12	73.55	72.83	82.59	83.62	83.11	80.03	79.62	79.82	76.23	77.32	76.80
70～74	76.49	74.46	75.40	77.98	74.41	76.15	84.08	85.10	84.60	76.80	69.69	73.26	82.97	79.60	81.30	80.52	75.82	78.21	75.04	73.47	74.26
75～79	76.03	66.08	70.17	75.64	67.94	71.14	82.56	81.08	81.69	71.73	66.06	68.36	79.68	77.31	78.27	78.81	67.90	72.64	72.01	64.61	67.99
80以上	60.53	33.49	42.71	56.37	35.65	42.81	64.35	47.24	53.15	54.97	30.91	39.30	62.65	41.71	49.04	59.72	37.46	44.98	51.94	32.42	38.99
胆沢 計	64.41	60.34	62.29	64.50	61.83	63.11	69.59	69.34	69.46	60.48	56.13	58.22	66.29	64.96	65.60	66.82	62.83	64.75	59.60	57.84	58.69
衣 川	男	女	計	男	女	計	男	女	計	男	女	計	男	女	計	男	女	計	男	女	計
18～19	35.90	57.14	44.78	39.02	35.71	37.68	51.11	53.33	52	51.61	33.33	42.62	40.63	41.67	41.07	59.38	44.00	52.63	62.50	31.82	50.00
20～24	24.18	31.94	27.61	25.88	39.62	31.16	31.17	53.19	39.52	25.00	26.53	25.58	23.38	26.67	24.59	33.33	43.24	37.11	30.51	30.30	30.43
25～29	44.44	47.06	45.65	41.86	47.44	44.51	46.91	53.52	50.00	33.73	49.02	39.55	30.56	53.06	39.67	41.67	38.71	40.78	37.31	54.84	42.86
30～34	42.86	52.94	47.37	47.62	51.14	49.22	51.46	50.00	50.81	47.96	52.56	50.00	43.30	46.58	44.71	44.74	59.65	51.13	48.68	58.49	52.71
35～39	50.00	49.02	49.54	52.88	51.16	52.11	61.86	63.95	62.84	48.91	55.84	52.07	44.57	49.35	46.75	54.64	54.79	54.71	47.31	60.00	52.76
40～44	53.98	63.16	58.17	57.02	60.36	58.67	59.50	70.87	64.73	47.83	54.72	51.13	48.25	61.17	54.38	54.13	65.59	59.41	59.43	67.42	63.08
45～49	67.50	67.42	67.46	67.42	62.82	65.27	70.00	75.31	72.51	56.57	63.53	59.78	58.59	62.92	60.64	65.71	72.16	68.81	67.29	78.00	72.46
50～54	73.28	72.73	73.02	73.64	74.79	74.24	71.57	75.21	73.54	58.02	71.72	65.56	60.98	66.33	63.89	66.27	68.24	67.26	71.79	65.33	68.63
55～59	76.57	68.48	72.42	76.03	73.14	74.45	82.52	85.80	84.26	70.37	64.23	67.28	65.91	69.92	67.92	75.89	74.78	75.33	72.17	73.68	72.93
60～64	71.30	77.37	74.14	72.27	71.57	71.94	82.95	87.56	85.17	73.95	70.62	72.30	77.73	73.58	75.65	83.13	73.74	78.17	74.13	77.05	75.77
65～69	75.73	74.44	75.13	71.89	76.88	74.10	77.21	84.30	80.36	65.24	79.19	71.54	72.77	78.53	75.38	76.89	81.77	79.21	79.44	84.18	81.71
70～74	79.13	71.55	75.32	80.80	72.00	76.40	88.81	87.69	88.26	76.92	70.07	73.45	76.26	74.15	75.17	80.33	76.47	78.47	73.68	75.76	74.65
75～79	82.50	71.35	75.84	72.81	74.03	73.51	79.05	78.87	78.95	72.90	68.50	70.51	71.17	73.60	72.46	78.79	70.64	74.52	79.05	77.06	78.04
80以上	54.73	28.01	36.84	57.97	31.85	40.38	67.28	43.38	51.30	52.53	35.09	40.89	59.81	36.18	43.98	58.33	36.05	43.50	61.50	38.84	46.35
衣川 計	62.99	57.61	60.21	63.24	58.35	60.71	69.72	68.38	69.03	59.03	57.14	58.06	60.42	58.79	59.58	66.27	61.37	63.77	65.58	63.47	64.50



