

(小選挙区選出議員選挙)

全体	投票率 (男)	投票率 (女)	投票率 (計)
10代	47.87%	48.51%	48.18%
20代	40.82%	45.23%	42.84%
30代	52.84%	56.14%	54.39%
40代	59.28%	61.55%	60.35%
50代	67.81%	68.07%	67.94%
60代	76.41%	76.99%	76.70%
70代	77.38%	73.39%	75.30%
80以上	60.20%	38.20%	45.78%
全体	64.40%	60.76%	62.52%

水沢	投票率 (男)	投票率 (女)	投票率 (計)
10代	43.40%	48.65%	45.97%
20代	40.74%	43.75%	42.17%
30代	51.83%	54.54%	53.12%
40代	57.57%	60.17%	58.81%
50代	66.82%	65.54%	66.20%
60代	75.04%	75.22%	75.13%
70代	76.69%	72.31%	74.27%
80以上	61.36%	41.98%	48.62%
全体	62.85%	60.17%	61.46%

江刺	投票率 (男)	投票率 (女)	投票率 (計)
10代	50.00%	42.08%	46.04%
20代	40.71%	46.73%	43.39%
30代	52.88%	59.06%	55.67%
40代	60.76%	61.11%	60.92%
50代	67.49%	71.06%	69.14%
60代	77.13%	77.04%	77.08%
70代	75.91%	73.31%	74.64%
80以上	59.98%	34.81%	43.60%
全体	64.77%	60.22%	62.48%

(小選挙区選出議員選挙)

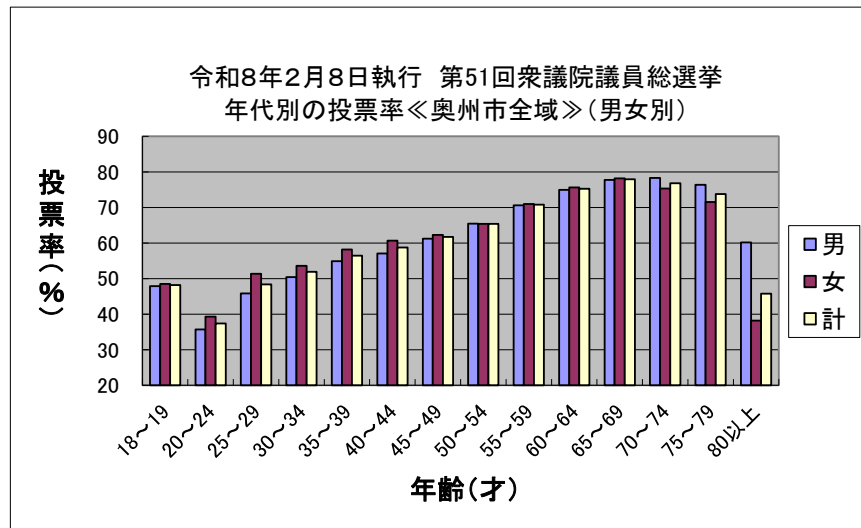
前沢	投票率 (男)	投票率 (女)	投票率 (計)
10代	59.41%	55.56%	57.50%
20代	44.08%	50.91%	47.07%
30代	56.03%	51.72%	53.96%
40代	63.73%	67.25%	65.40%
50代	72.38%	73.43%	72.88%
60代	76.38%	81.08%	78.75%
70代	80.76%	78.15%	79.46%
80以上	62.20%	41.90%	49.20%
全体	68.11%	64.67%	66.35%

胆沢	投票率 (男)	投票率 (女)	投票率 (計)
10代	51.15%	48.11%	49.79%
20代	36.67%	44.19%	40.10%
30代	54.08%	59.72%	56.74%
40代	58.67%	63.04%	60.73%
50代	68.18%	68.70%	68.42%
60代	77.45%	79.25%	78.36%
70代	79.66%	71.59%	75.47%
80以上	54.15%	30.53%	38.26%
全体	65.13%	59.99%	62.48%

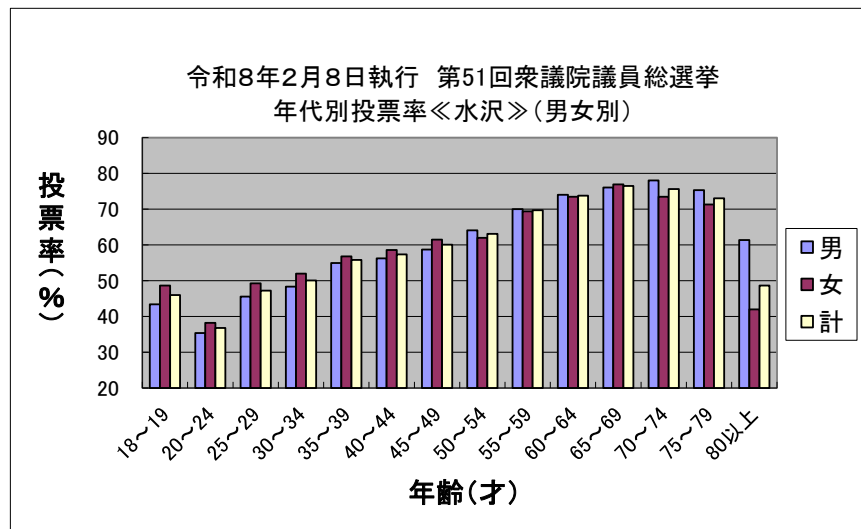
衣川	投票率 (男)	投票率 (女)	投票率 (計)
10代	43.75%	70.37%	55.93%
20代	46.73%	49.06%	47.50%
30代	55.64%	68.09%	60.79%
40代	62.02%	61.08%	61.60%
50代	70.52%	72.35%	71.43%
60代	84.88%	77.52%	81.10%
70代	75.60%	79.46%	77.53%
80以上	61.29%	33.15%	42.55%
全体	68.49%	63.08%	65.73%

令和8年2月8日執行 第51回衆議院議員総選挙 年代別投票率(奥州市) 5才刻み

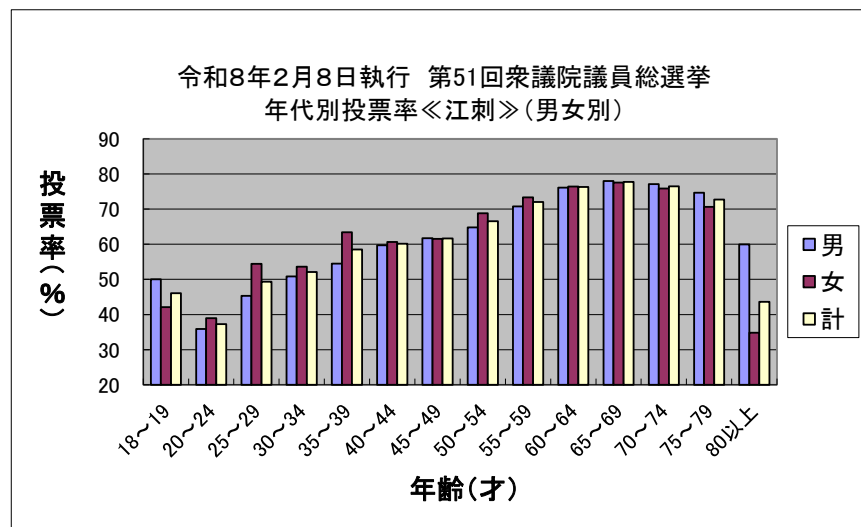
奥州市全域	投票率(%)		
	男	女	計
18~19	47.87	48.51	48.18
20~24	35.71	39.32	37.39
25~29	45.85	51.37	48.35
30~34	50.42	53.62	51.91
35~39	54.87	58.21	56.45
40~44	57.05	60.66	58.74
45~49	61.24	62.30	61.74
50~54	65.43	65.40	65.42
55~59	70.63	71.00	70.81
60~64	74.92	75.66	75.29
65~69	77.75	78.16	77.96
70~74	78.32	75.32	76.79
75~79	76.38	71.53	73.78
80以上	60.20	38.20	45.78
計	64.40	60.76	62.52



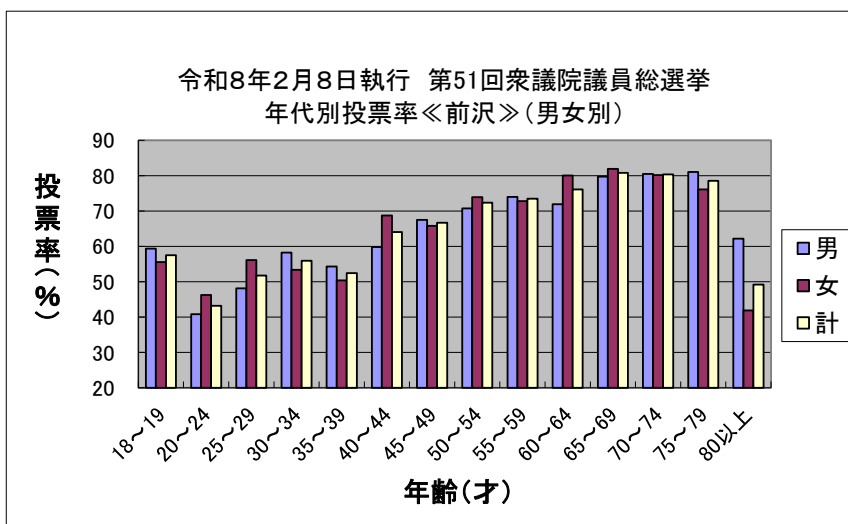
水沢	投票率(%)		
	男	女	計
18~19	43.40	48.65	45.97
20~24	35.38	38.24	36.78
25~29	45.54	49.26	47.25
30~34	48.33	51.96	50.04
35~39	54.95	56.78	55.83
40~44	56.21	58.62	57.35
45~49	58.74	61.48	60.05
50~54	64.09	62.01	63.09
55~59	70.03	69.37	69.70
60~64	74.01	73.48	73.74
65~69	76.07	76.94	76.51
70~74	78.00	73.44	75.60
75~79	75.29	71.31	73.00
80以上	61.36	41.98	48.62



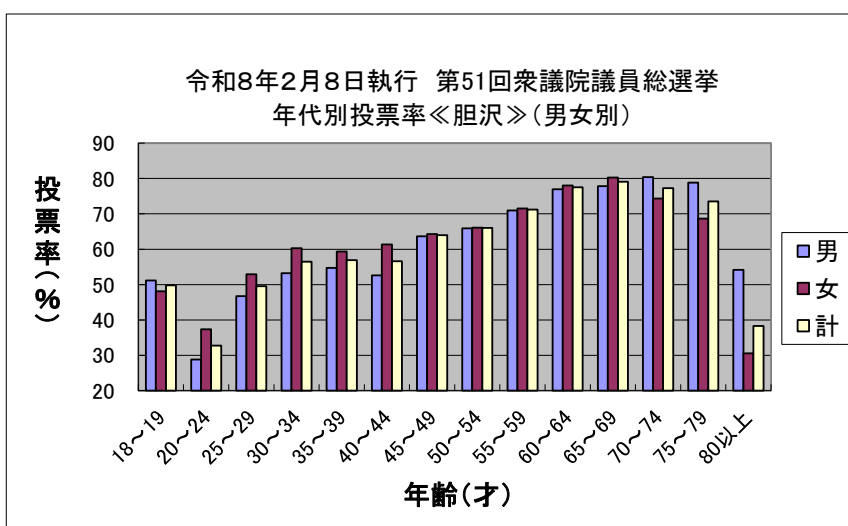
江刺	投票率(%)		
	男	女	計
18~19	50.00	42.08	46.04
20~24	35.91	38.94	37.26
25~29	45.32	54.42	49.33
30~34	50.87	53.63	52.11
35~39	54.49	63.41	58.52
40~44	59.68	60.65	60.12
45~49	61.75	61.53	61.65
50~54	64.81	68.84	66.59
55~59	70.79	73.35	72.03
60~64	76.10	76.44	76.27
65~69	77.99	77.53	77.76
70~74	77.11	75.85	76.49
75~79	74.65	70.66	72.70
80以上	59.98	34.81	43.60



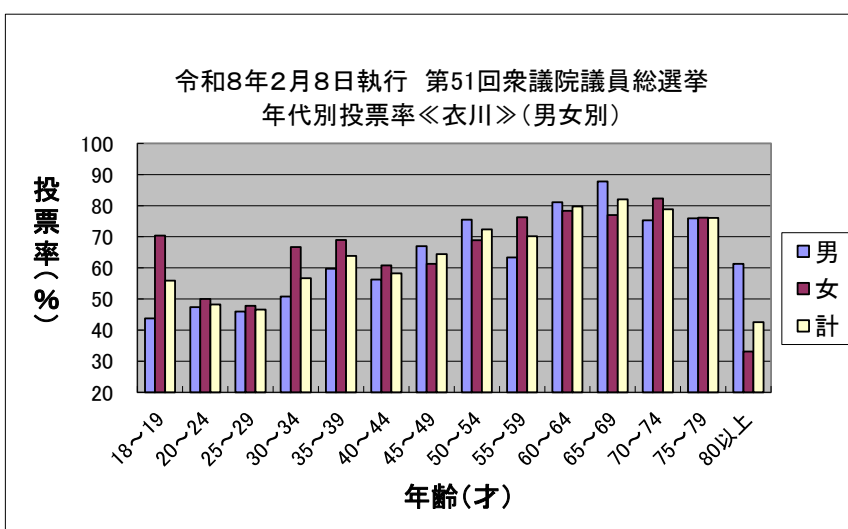
前沢	投票率(%)		
	年齢(才)	男	女
18~19	59.41	55.56	57.50
20~24	40.85	46.29	43.17
25~29	48.13	56.13	51.75
30~34	58.25	53.40	55.92
35~39	54.31	50.41	52.44
40~44	59.79	68.75	64.03
45~49	67.53	65.81	66.71
50~54	70.76	73.91	72.35
55~59	74.02	72.82	73.48
60~64	71.96	80.05	76.12
65~69	79.76	81.91	80.83
70~74	80.47	80.19	80.34
75~79	81.08	76.15	78.56
80以上	62.20	41.90	49.20



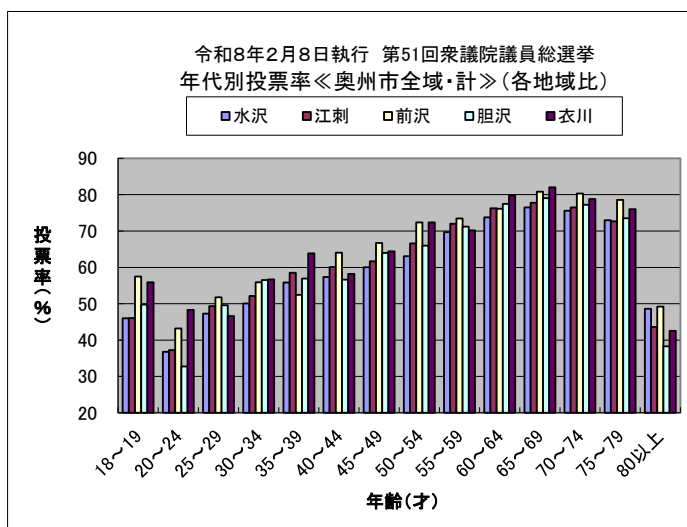
胆沢	投票率(%)		
	年齢(才)	男	女
18~19	51.15	48.11	49.79
20~24	28.81	37.37	32.72
25~29	46.74	52.90	49.56
30~34	53.25	60.29	56.48
35~39	54.72	59.32	56.93
40~44	52.59	61.35	56.60
45~49	63.68	64.30	63.98
50~54	65.93	66.10	66.01
55~59	70.97	71.54	71.25
60~64	76.99	78.02	77.50
65~69	77.84	80.25	79.07
70~74	80.39	74.31	77.25
75~79	78.86	68.68	73.55
80以上	54.15	30.53	38.26



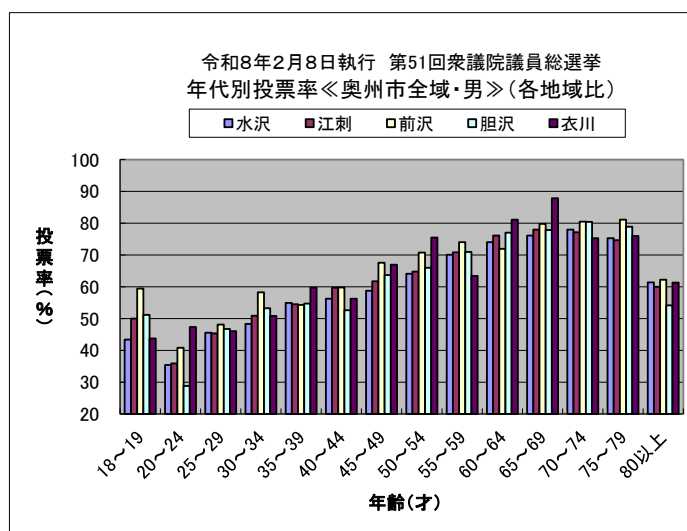
衣川	投票率(%)		
	年齢(才)	男	女
18~19	43.75	70.37	55.93
20~24	47.37	50.00	48.28
25~29	46.00	47.83	46.58
30~34	50.82	66.67	56.70
35~39	59.72	68.97	63.85
40~44	56.25	60.81	58.24
45~49	66.96	61.29	64.39
50~54	75.49	68.89	72.40
55~59	63.38	76.25	70.20
60~64	81.10	78.33	79.76
65~69	87.80	77.01	82.05
70~74	75.28	82.32	78.83
75~79	75.95	76.13	76.04
80以上	61.29	33.15	42.55



奥州市全域	投票率(%)					
年齢(才)	水沢	江刺	前沢	胆沢	衣川	計
18~19	45.97	46.04	57.50	49.79	55.93	48.18
20~24	36.78	37.26	43.17	32.72	48.28	37.39
25~29	47.25	49.33	51.75	49.56	46.58	48.35
30~34	50.04	52.11	55.92	56.48	56.70	51.91
35~39	55.83	58.52	52.44	56.93	63.85	56.45
40~44	57.35	60.12	64.03	56.60	58.24	58.74
45~49	60.05	61.65	66.71	63.98	64.39	61.74
50~54	63.09	66.59	72.35	66.01	72.40	65.42
55~59	69.70	72.03	73.48	71.25	70.20	70.81
60~64	73.74	76.27	76.12	77.50	79.76	75.29
65~69	76.51	77.76	80.83	79.07	82.05	77.96
70~74	75.60	76.49	80.34	77.25	78.83	76.79
75~79	73.00	72.70	78.56	73.55	76.04	73.78
80以上	48.62	43.60	49.20	38.26	42.55	45.78
計						62.52



男	投票率(%)					
年齢(才)	水沢	江刺	前沢	胆沢	衣川	計
18~19	43.40	50.00	59.41	51.15	43.75	47.87
20~24	35.38	35.91	40.85	28.81	47.37	35.71
25~29	45.54	45.32	48.13	46.74	46.00	45.85
30~34	48.33	50.87	58.25	53.25	50.82	50.42
35~39	54.95	54.49	54.31	54.72	59.72	54.87
40~44	56.21	59.68	59.79	52.59	56.25	57.05
45~49	58.74	61.75	67.53	63.68	66.96	61.24
50~54	64.09	64.81	70.76	65.93	75.49	65.43
55~59	70.03	70.79	74.02	70.97	63.38	70.63
60~64	74.01	76.10	71.96	76.99	81.10	74.92
65~69	76.07	77.99	79.76	77.84	87.80	77.75
70~74	78.00	77.11	80.47	80.39	75.28	78.32
75~79	75.29	74.65	81.08	78.86	75.95	76.38
80以上	61.36	59.98	62.20	54.15	61.29	60.20
計						64.40



女	投票率(%)					
年齢(才)	水沢	江刺	前沢	胆沢	衣川	計
18~19	48.65	42.08	55.56	48.11	70.37	48.51
20~24	38.24	38.94	46.29	37.37	50.00	39.32
25~29	49.26	54.42	56.13	52.90	47.83	51.37
30~34	51.96	53.63	53.40	60.29	66.67	53.62
35~39	56.78	63.41	50.41	59.32	68.97	58.21
40~44	58.62	60.65	68.75	61.35	60.81	60.66
45~49	61.48	61.53	65.81	64.30	61.29	62.30
50~54	62.01	68.84	73.91	66.10	68.89	65.40
55~59	69.37	73.35	72.82	71.54	76.25	71.00
60~64	73.48	76.44	80.05	78.02	78.33	75.66
65~69	76.94	77.53	81.91	80.25	77.01	78.16
70~74	73.44	75.85	80.19	74.31	82.32	75.32
75~79	71.31	70.66	76.15	68.68	76.13	71.53
80以上	41.98	34.81	41.90	30.53	33.15	38.20
計						60.76

