

全体	投票率 (男)	投票率 (女)	投票率 (計)
10代	44.32%	46.42%	45.34%
20代	33.79%	40.28%	36.75%
30代	43.43%	50.14%	46.58%
40代	54.85%	61.53%	58.00%
50代	63.62%	68.52%	65.97%
60代	74.75%	78.10%	76.44%
70代	78.37%	77.22%	77.76%
80以上	63.13%	45.33%	51.46%
全体	61.57%	62.23%	61.91%

水沢	投票率 (男)	投票率 (女)	投票率 (計)
10代	36.47%	44.44%	40.41%
20代	31.52%	37.12%	34.15%
30代	40.38%	46.41%	43.26%
40代	51.29%	59.05%	55.00%
50代	60.75%	64.98%	62.82%
60代	70.81%	74.23%	72.53%
70代	75.07%	73.88%	74.42%
80以上	62.58%	46.65%	52.10%
全体	57.59%	59.51%	58.59%

江刺	投票率 (男)	投票率 (女)	投票率 (計)
10代	51.66%	44.88%	48.32%
20代	34.25%	41.87%	37.65%
30代	43.33%	52.96%	47.68%
40代	55.80%	61.64%	58.49%
50代	64.29%	70.08%	66.96%
60代	77.33%	79.16%	78.25%
70代	77.99%	78.53%	78.25%
80以上	62.52%	43.97%	50.45%
全体	62.83%	62.76%	62.79%

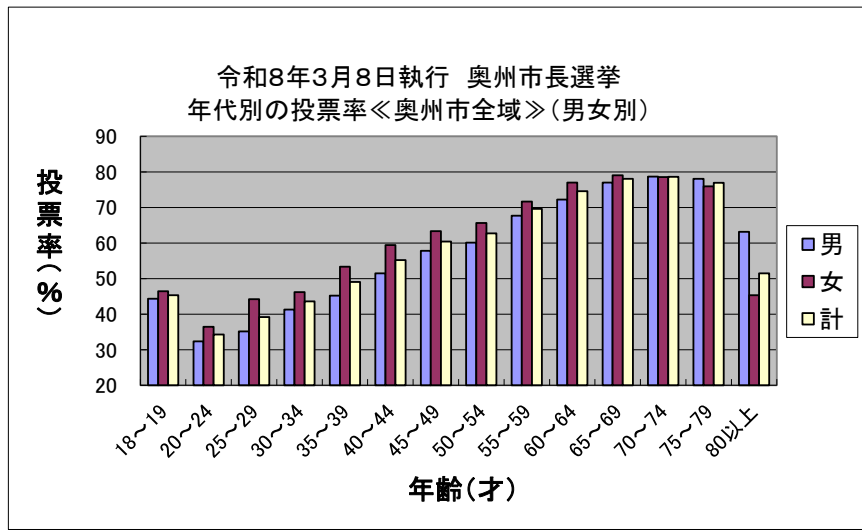
前沢	投票率 (男)	投票率 (女)	投票率 (計)
10代	65.05%	57.14%	61.19%
20代	38.01%	47.08%	42.01%
30代	47.21%	52.19%	49.61%
40代	62.71%	67.20%	64.84%
50代	68.66%	75.43%	71.92%
60代	77.79%	83.71%	80.78%
70代	83.74%	82.60%	83.17%
80以上	66.45%	50.71%	56.38%
全体	67.66%	67.93%	67.80%

胆沢	投票率 (男)	投票率 (女)	投票率 (計)
10代	41.18%	44.95%	42.86%
20代	37.98%	45.43%	41.32%
30代	53.62%	59.24%	56.29%
40代	58.40%	65.22%	61.61%
50代	69.46%	74.21%	71.67%
60代	78.95%	84.08%	81.54%
70代	82.91%	79.72%	81.25%
80以上	62.17%	39.89%	47.23%
全体	66.93%	65.44%	66.16%

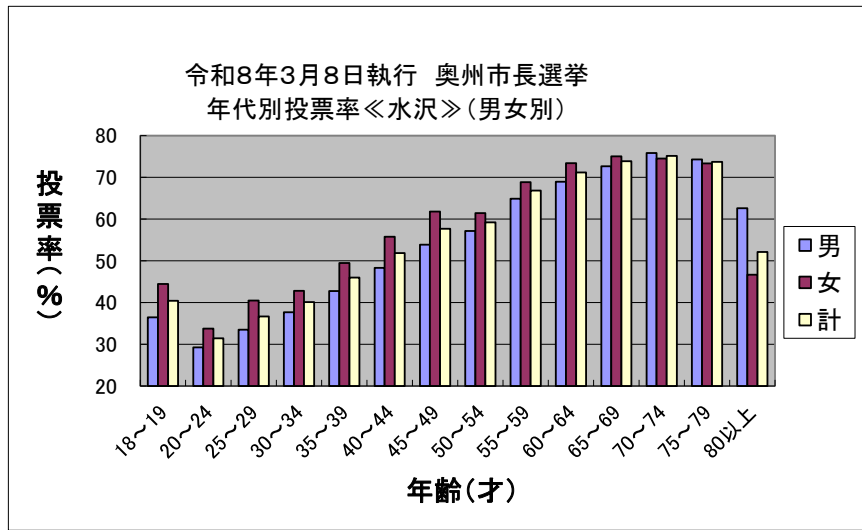
衣川	投票率 (男)	投票率 (女)	投票率 (計)
10代	46.88%	55.56%	50.85%
20代	41.35%	52.83%	45.22%
30代	47.37%	56.99%	51.33%
40代	62.80%	67.07%	64.71%
50代	67.63%	76.02%	71.80%
60代	82.70%	80.20%	81.42%
70代	81.57%	84.32%	82.96%
80以上	65.43%	41.42%	49.55%
全体	68.63%	67.02%	67.81%

令和8年3月8日執行 奥州市長選挙 年代別投票率(奥州市) 5才刻み

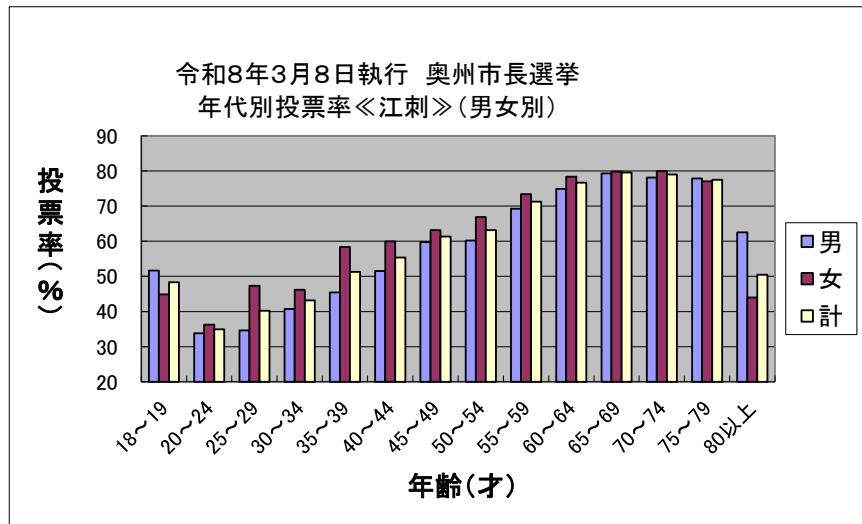
奥州市全域	投票率(%)		
	男	女	計
18~19	44.32	46.42	45.34
20~24	32.38	36.47	34.29
25~29	35.14	44.21	39.19
30~34	41.30	46.17	43.57
35~39	45.20	53.37	49.06
40~44	51.47	59.43	55.19
45~49	57.82	63.31	60.43
50~54	60.10	65.66	62.72
55~59	67.72	71.63	69.63
60~64	72.21	76.98	74.60
65~69	77.02	79.08	78.06
70~74	78.66	78.55	78.60
75~79	78.05	75.94	76.92
80以上	63.13	45.33	51.46
計	61.57	62.23	61.91



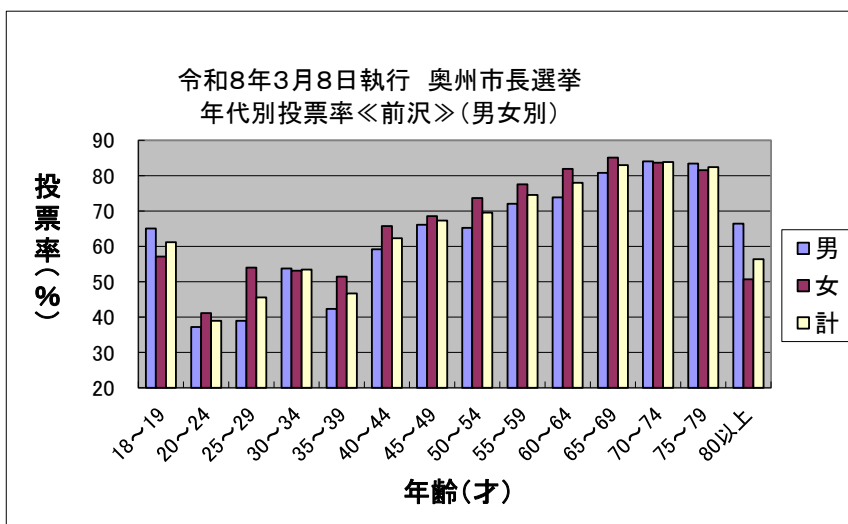
水沢	投票率(%)		
	男	女	計
18~19	36.47	44.44	40.41
20~24	29.28	33.74	31.44
25~29	33.49	40.48	36.67
30~34	37.69	42.83	40.12
35~39	42.77	49.48	46.00
40~44	48.29	55.78	51.86
45~49	53.85	61.80	57.66
50~54	57.16	61.42	59.21
55~59	64.87	68.83	66.84
60~64	68.95	73.37	71.15
65~69	72.65	75.06	73.87
70~74	75.82	74.50	75.13
75~79	74.28	73.33	73.74
80以上	62.58	46.65	52.10



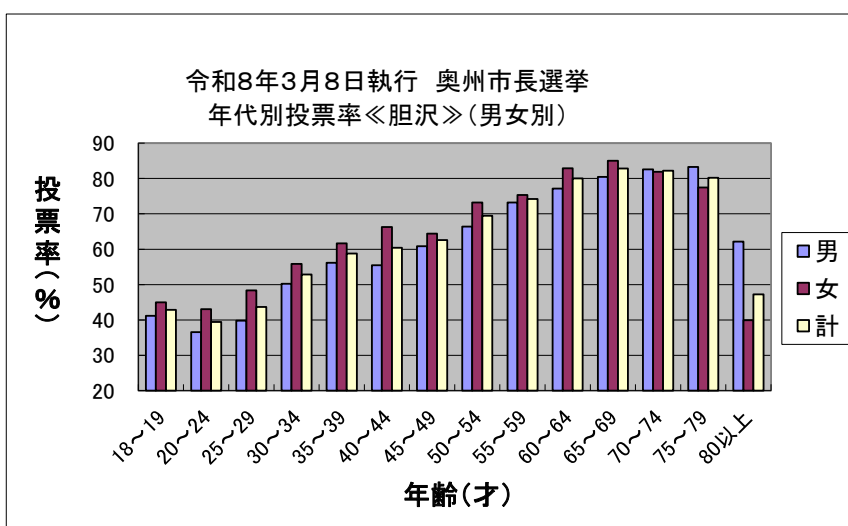
江刺	投票率(%)		
	男	女	計
18~19	51.66	44.88	48.32
20~24	33.81	36.29	34.94
25~29	34.64	47.34	40.20
30~34	40.70	46.19	43.18
35~39	45.44	58.37	51.29
40~44	51.55	59.94	55.37
45~49	59.77	63.16	61.35
50~54	60.24	66.85	63.15
55~59	69.25	73.43	71.27
60~64	74.91	78.39	76.67
65~69	79.32	79.80	79.56
70~74	78.09	79.93	79.00
75~79	77.88	77.06	77.48
80以上	62.52	43.97	50.45



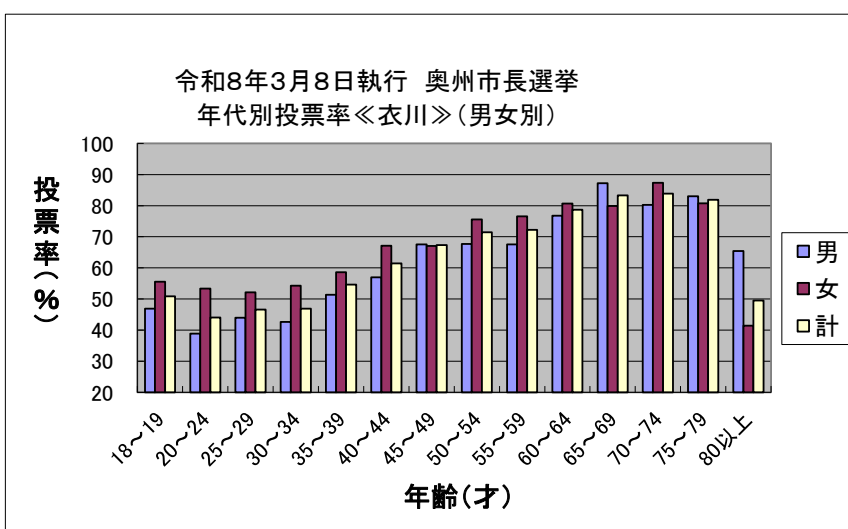
前沢	投票率(%)		
	年齢(才)	男	女
18~19	65.05	57.14	61.19
20~24	37.22	41.14	38.94
25~29	38.95	54.00	45.59
30~34	53.77	53.16	53.47
35~39	42.32	51.44	46.67
40~44	59.20	65.77	62.29
45~49	66.15	68.56	67.30
50~54	65.25	73.71	69.54
55~59	72.07	77.56	74.56
60~64	73.88	81.93	77.98
65~69	80.82	85.13	82.98
70~74	84.06	83.66	83.86
75~79	83.40	81.56	82.46
80以上	66.45	50.71	56.38



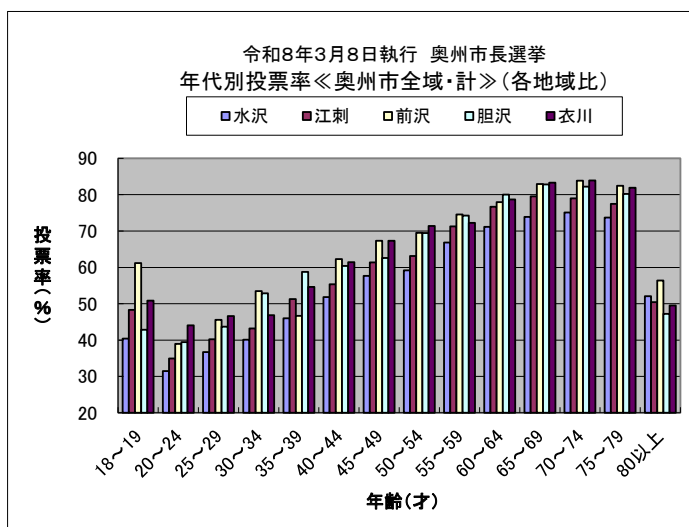
胆沢	投票率(%)		
	年齢(才)	男	女
18~19	41.18	44.95	42.86
20~24	36.52	43.01	39.42
25~29	39.78	48.37	43.66
30~34	50.21	55.83	52.83
35~39	56.15	61.64	58.78
40~44	55.44	66.26	60.39
45~49	60.86	64.43	62.58
50~54	66.40	73.19	69.47
55~59	73.22	75.33	74.23
60~64	77.17	82.89	80.00
65~69	80.49	85.03	82.82
70~74	82.59	81.89	82.23
75~79	83.25	77.46	80.22
80以上	62.17	39.89	47.23



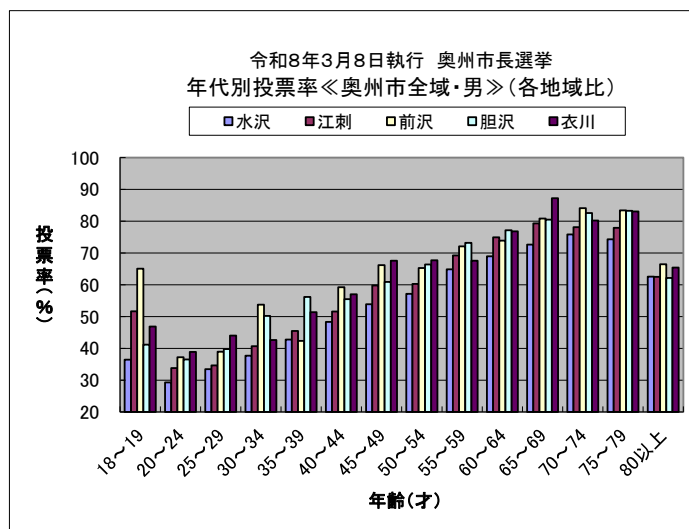
衣川	投票率(%)		
	年齢(才)	男	女
18~19	46.88	55.56	50.85
20~24	38.89	53.33	44.05
25~29	44.00	52.17	46.58
30~34	42.62	54.29	46.88
35~39	51.39	58.62	54.62
40~44	56.99	67.12	61.45
45~49	67.54	67.02	67.31
50~54	67.68	75.56	71.43
55~59	67.57	76.54	72.26
60~64	76.80	80.67	78.69
65~69	87.20	79.89	83.33
70~74	80.23	87.36	83.90
75~79	83.02	80.77	81.90
80以上	65.43	41.42	49.55



奥州市全域	投票率(%)					
年齢(才)	水沢	江刺	前沢	胆沢	衣川	計
18~19	40.41	48.32	61.19	42.86	50.85	45.34
20~24	31.44	34.94	38.94	39.42	44.05	34.29
25~29	36.67	40.20	45.59	43.66	46.58	39.19
30~34	40.12	43.18	53.47	52.83	46.88	43.57
35~39	46.00	51.29	46.67	58.78	54.62	49.06
40~44	51.86	55.37	62.29	60.39	61.45	55.19
45~49	57.66	61.35	67.30	62.58	67.31	60.43
50~54	59.21	63.15	69.54	69.47	71.43	62.72
55~59	66.84	71.27	74.56	74.23	72.26	69.63
60~64	71.15	76.67	77.98	80.00	78.69	74.60
65~69	73.87	79.56	82.98	82.82	83.33	78.06
70~74	75.13	79.00	83.86	82.23	83.90	78.60
75~79	73.74	77.48	82.46	80.22	81.90	76.92
80以上	52.10	50.45	56.38	47.23	49.55	51.46
計						61.91



男	投票率(%)					
年齢(才)	水沢	江刺	前沢	胆沢	衣川	計
18~19	36.47	51.66	65.05	41.18	46.88	44.32
20~24	29.28	33.81	37.22	36.52	38.89	32.38
25~29	33.49	34.64	38.95	39.78	44.00	35.14
30~34	37.69	40.70	53.77	50.21	42.62	41.30
35~39	42.77	45.44	42.32	56.15	51.39	45.20
40~44	48.29	51.55	59.20	55.44	56.99	51.47
45~49	53.85	59.77	66.15	60.86	67.54	57.82
50~54	57.16	60.24	65.25	66.40	67.68	60.10
55~59	64.87	69.25	72.07	73.22	67.57	67.72
60~64	68.95	74.91	73.88	77.17	76.80	72.21
65~69	72.65	79.32	80.82	80.49	87.20	77.02
70~74	75.82	78.09	84.06	82.59	80.23	78.66
75~79	74.28	77.88	83.40	83.25	83.02	78.05
80以上	62.58	62.52	66.45	62.17	65.43	63.13
計						61.57



女	投票率(%)					
年齢(才)	水沢	江刺	前沢	胆沢	衣川	計
18~19	44.44	44.88	57.14	44.95	55.56	46.42
20~24	33.74	36.29	41.14	43.01	53.33	36.47
25~29	40.48	47.34	54.00	48.37	52.17	44.21
30~34	42.83	46.19	53.16	55.83	54.29	46.17
35~39	49.48	58.37	51.44	61.64	58.62	53.37
40~44	55.78	59.94	65.77	66.26	67.12	59.43
45~49	61.80	63.16	68.56	64.43	67.02	63.31
50~54	61.42	66.85	73.71	73.19	75.56	65.66
55~59	68.83	73.43	77.56	75.33	76.54	71.63
60~64	73.37	78.39	81.93	82.89	80.67	76.98
65~69	75.06	79.80	85.13	85.03	79.89	79.08
70~74	74.50	79.93	83.66	81.89	87.36	78.55
75~79	73.33	77.06	81.56	77.46	80.77	75.94
80以上	46.65	43.97	50.71	39.89	41.42	45.33
計						62.23

