

令和5年9月3日執行 岩手県知事選挙 年代別投票率(10才刻み)

全体	投票率 (男)	投票率 (女)	投票率 (計)
10代	47.00%	46.26%	46.64%
20代	32.85%	39.24%	35.82%
30代	42.78%	50.83%	46.52%
40代	52.78%	57.54%	55.04%
50代	64.31%	67.30%	65.76%
60代	73.65%	75.46%	74.55%
70代	75.69%	74.74%	75.19%
80以上	59.79%	40.93%	47.45%
全体	59.82%	59.36%	59.58%

水沢	投票率 (男)	投票率 (女)	投票率 (計)
10代	46.15%	42.96%	44.57%
20代	29.49%	36.11%	32.61%
30代	41.43%	47.57%	44.33%
40代	49.55%	53.37%	51.40%
50代	61.55%	63.32%	62.42%
60代	71.36%	71.73%	71.55%
70代	73.14%	73.09%	73.11%
80以上	60.10%	42.57%	48.64%
全体	56.62%	56.91%	56.77%

江刺	投票率 (男)	投票率 (女)	投票率 (計)
10代	45.00%	49.74%	47.45%
20代	32.39%	40.05%	35.95%
30代	43.17%	54.26%	48.18%
40代	53.14%	58.76%	55.74%
50代	65.59%	70.64%	67.99%
60代	72.30%	76.39%	74.31%
70代	75.39%	74.14%	74.76%
80以上	58.27%	38.85%	45.62%
全体	60.14%	59.63%	59.88%

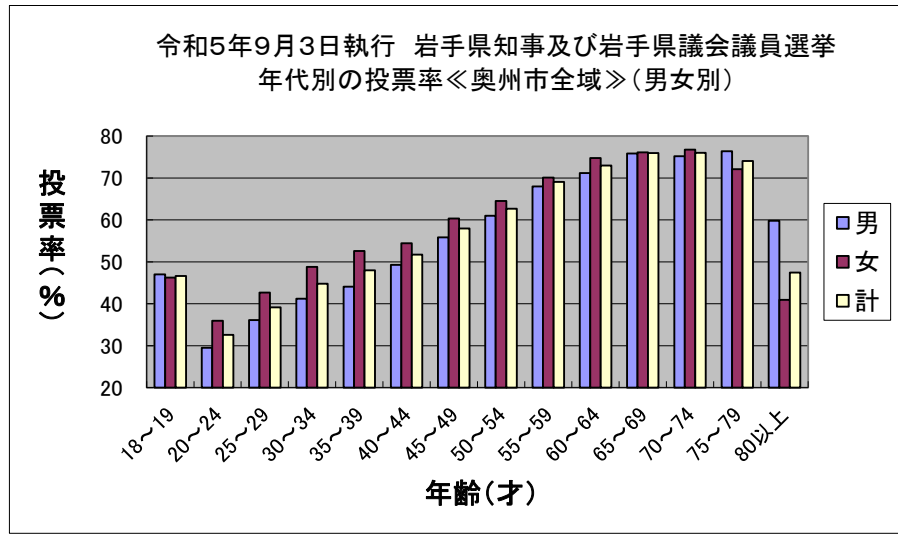
前沢	投票率 (男)	投票率 (女)	投票率 (計)
10代	54.29%	51.46%	52.88%
20代	42.93%	46.84%	44.76%
30代	44.66%	54.33%	49.08%
40代	59.19%	67.08%	62.97%
50代	69.31%	72.90%	71.05%
60代	77.95%	82.07%	79.97%
70代	81.00%	80.39%	80.69%
80以上	64.39%	45.14%	51.95%
全体	66.02%	65.52%	65.76%

胆沢	投票率 (男)	投票率 (女)	投票率 (計)
10代	42.34%	49.12%	45.78%
20代	41.45%	46.70%	43.83%
30代	47.42%	54.50%	50.77%
40代	57.76%	62.58%	60.00%
50代	68.77%	72.32%	70.45%
60代	77.38%	79.27%	78.33%
70代	79.48%	75.99%	77.68%
80以上	58.63%	37.64%	44.57%
全体	64.66%	62.00%	63.28%

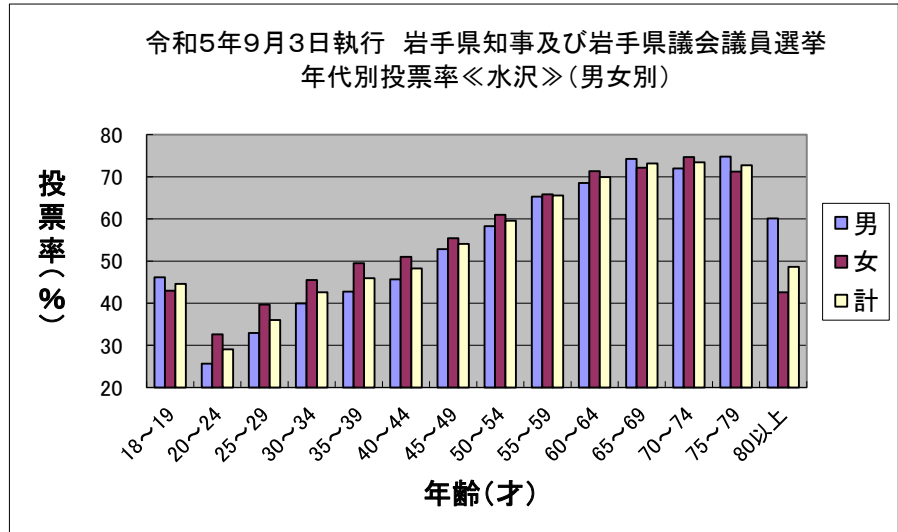
衣川	投票率 (男)	投票率 (女)	投票率 (計)
10代	58.97%	38.10%	51.67%
20代	33.63%	41.79%	36.67%
30代	38.95%	57.52%	46.32%
40代	60.78%	66.30%	63.40%
50代	67.42%	75.54%	71.55%
60代	81.27%	78.31%	79.74%
70代	74.92%	77.63%	76.23%
80以上	56.28%	36.25%	43.13%
全体	63.69%	62.45%	63.06%

令和5年9月3日執行 岩手県知事及び岩手県議会議員選挙 年代別投票率(奥州市) 5才刻み

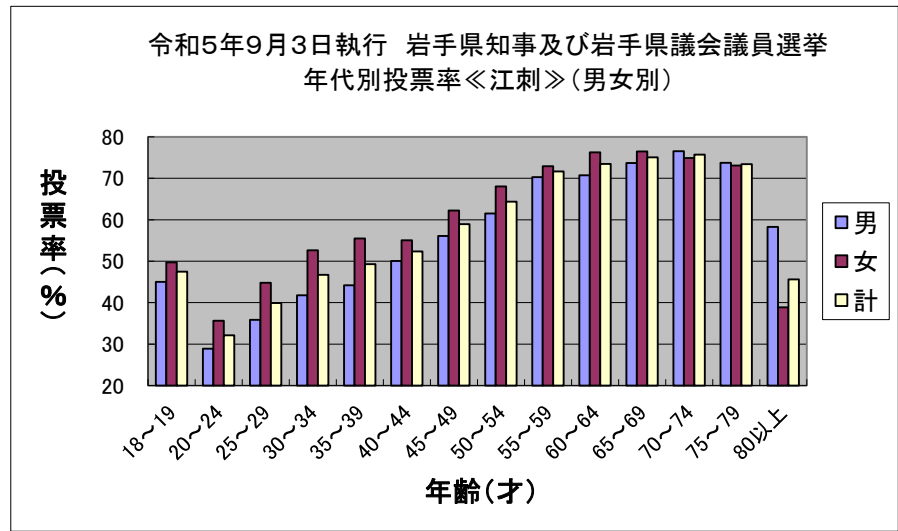
奥州市全域	投票率(%)		
	年齢(才)	男	女
18~19	47.00	46.26	46.64
20~24	29.51	35.95	32.56
25~29	36.12	42.69	39.12
30~34	41.21	48.77	44.76
35~39	44.05	52.57	47.96
40~44	49.26	54.42	51.72
45~49	55.87	60.32	57.98
50~54	60.99	64.51	62.66
55~59	67.99	70.11	69.05
60~64	71.21	74.75	72.99
65~69	75.84	76.12	75.98
70~74	75.21	76.79	76.02
75~79	76.38	72.10	74.06
80以上	59.79	40.93	47.45
計	59.82	59.36	59.58



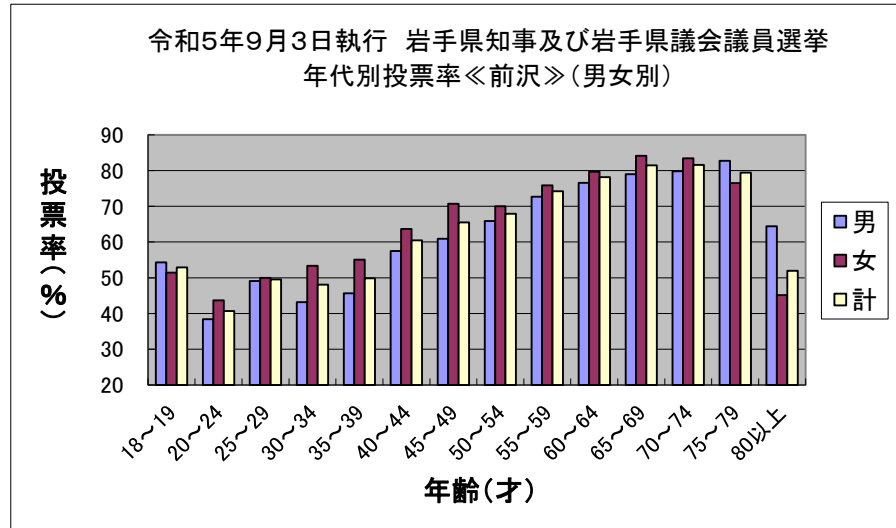
水沢	投票率(%)		
	年齢(才)	男	女
18~19	46.15	42.96	44.57
20~24	25.66	32.61	29.04
25~29	32.94	39.66	36.01
30~34	39.94	45.49	42.58
35~39	42.75	49.46	45.90
40~44	45.64	51.00	48.25
45~49	52.84	55.40	54.07
50~54	58.26	60.99	59.58
55~59	65.31	65.81	65.56
60~64	68.50	71.34	69.93
65~69	74.24	72.12	73.17
70~74	71.96	74.65	73.40
75~79	74.79	71.20	72.74
80以上	60.10	42.57	48.64



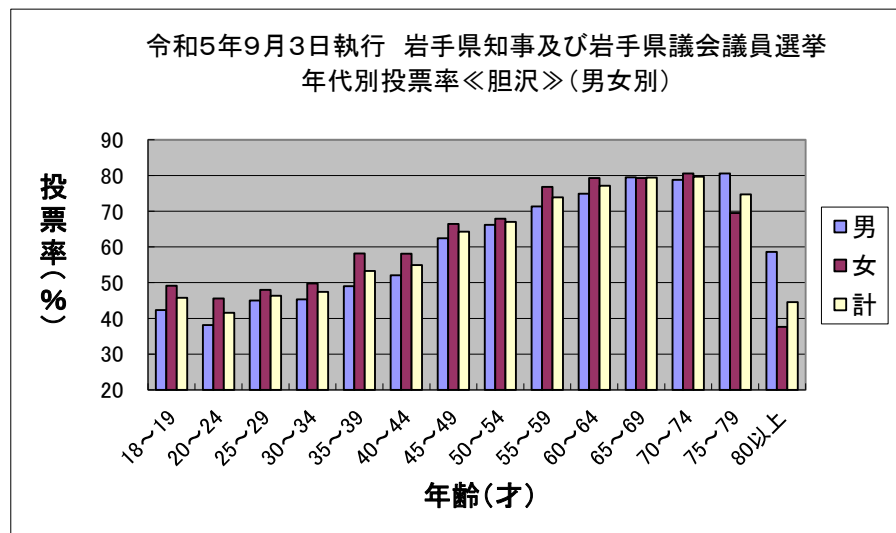
江刺	投票率(%)		
	年齢(才)	男	女
18~19	45.00	49.74	47.45
20~24	28.91	35.66	32.11
25~29	35.87	44.79	39.93
30~34	41.79	52.63	46.71
35~39	44.18	55.46	49.26
40~44	50.06	55.06	52.36
45~49	56.09	62.24	58.95
50~54	61.53	68.01	64.38
55~59	70.30	72.94	71.65
60~64	70.70	76.28	73.48
65~69	73.67	76.49	75.03
70~74	76.55	74.90	75.72
75~79	73.73	73.10	73.41
80以上	58.27	38.85	45.62



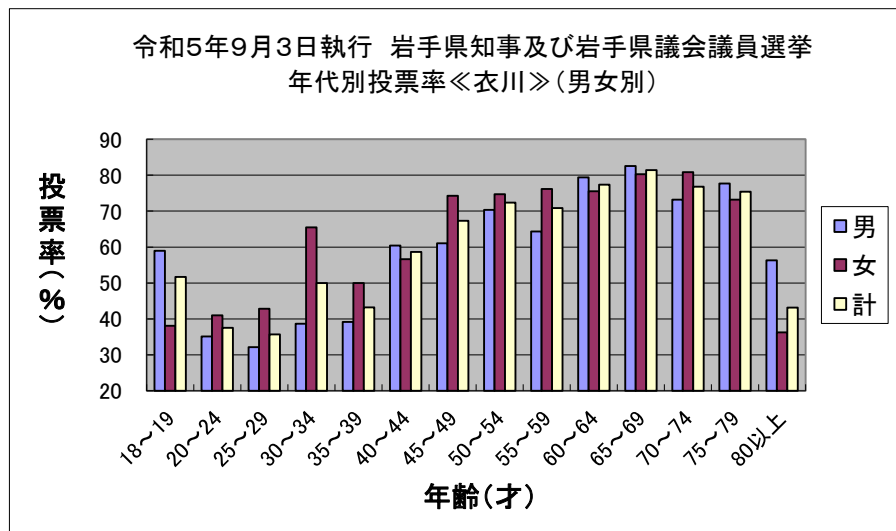
前沢	投票率(%)		
	年齢(才)	男	女
18~19	54.29	51.46	52.88
20~24	38.43	43.68	40.69
25~29	49.10	50.00	49.56
30~34	43.17	53.37	48.05
35~39	45.67	55.09	49.83
40~44	57.47	63.64	60.47
45~49	60.90	70.70	65.52
50~54	65.85	70.03	67.91
55~59	72.68	75.87	74.20
60~64	76.58	79.68	78.15
65~69	78.99	84.12	81.44
70~74	79.83	83.42	81.61
75~79	82.71	76.51	79.43
80以上	64.39	45.14	51.95



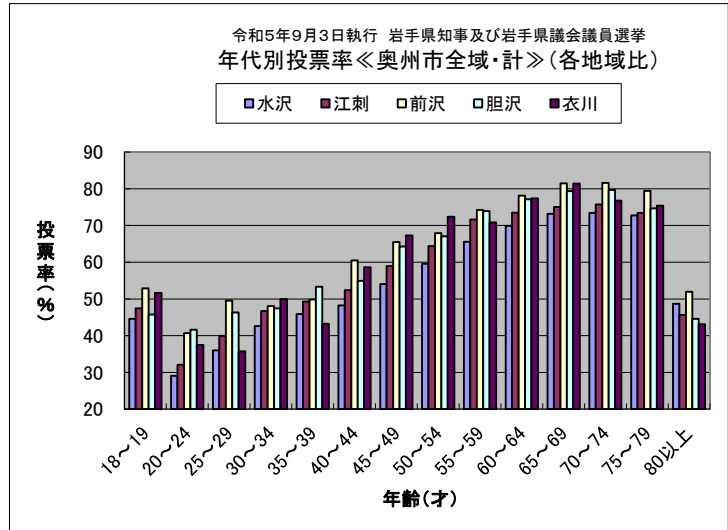
胆沢	投票率(%)		
	年齢(才)	男	女
18~19	42.34	49.12	45.78
20~24	38.14	45.59	41.59
25~29	45.00	48.00	46.33
30~34	45.32	49.79	47.45
35~39	49.01	58.15	53.30
40~44	52.08	58.08	54.91
45~49	62.40	66.43	64.25
50~54	66.21	67.93	67.03
55~59	71.33	76.80	73.91
60~64	74.90	79.25	77.13
65~69	79.50	79.29	79.39
70~74	78.79	80.54	79.68
75~79	80.56	69.47	74.67
80以上	58.63	37.64	44.57



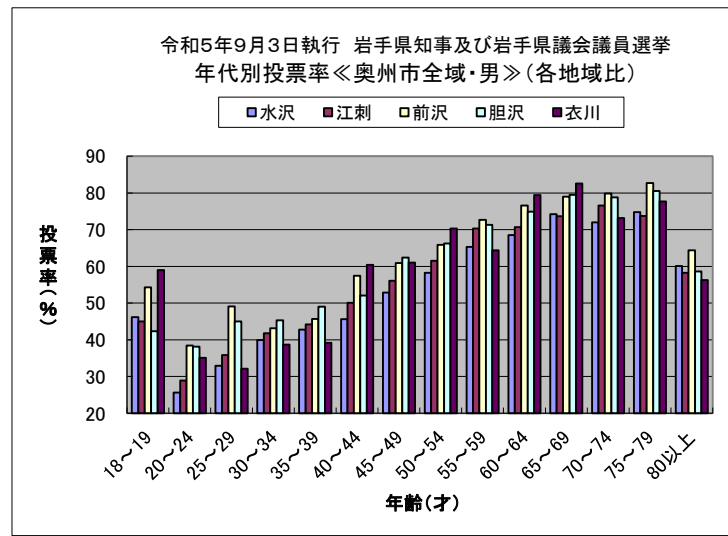
衣川	投票率(%)		
	年齢(才)	男	女
18~19	58.97	38.10	51.67
20~24	35.09	41.03	37.50
25~29	32.14	42.86	35.71
30~34	38.67	65.45	50.00
35~39	39.18	50.00	43.23
40~44	60.44	56.63	58.62
45~49	61.06	74.26	67.29
50~54	70.33	74.68	72.35
55~59	64.37	76.19	70.83
60~64	79.41	75.51	77.39
65~69	82.56	80.29	81.39
70~74	73.20	80.81	76.78
75~79	77.69	73.17	75.41
80以上	56.28	36.25	43.13



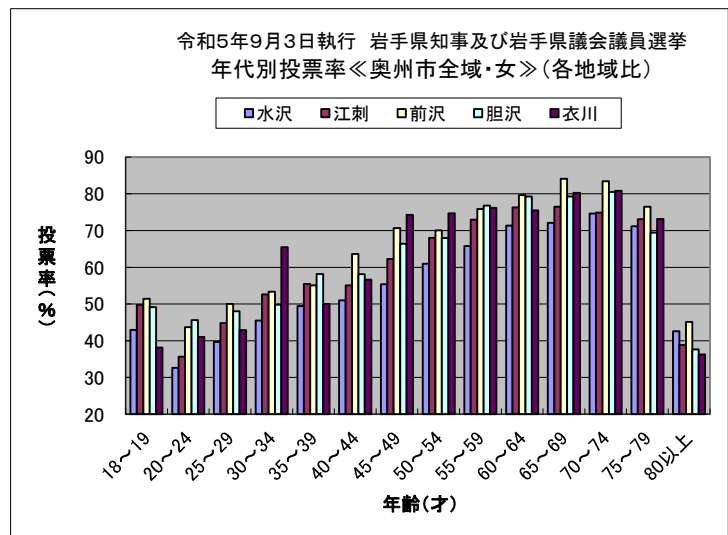
奥州市全域						
投票率(%)						
年齢(才)	水沢	江刺	前沢	胆沢	衣川	計
18~19	44.57	47.45	52.88	45.78	51.67	46.64
20~24	29.04	32.11	40.69	41.59	37.50	32.56
25~29	36.01	39.93	49.56	46.33	35.71	39.12
30~34	42.58	46.71	48.05	47.45	50.00	44.76
35~39	45.90	49.26	49.83	53.30	43.23	47.96
40~44	48.25	52.36	60.47	54.91	58.62	51.72
45~49	54.07	58.95	65.52	64.25	67.29	57.98
50~54	59.58	64.38	67.91	67.03	72.35	62.66
55~59	65.56	71.65	74.20	73.91	70.83	69.05
60~64	69.93	73.48	78.15	77.13	77.39	72.99
65~69	73.17	75.03	81.44	79.39	81.39	75.98
70~74	73.40	75.72	81.61	79.68	76.78	76.02
75~79	72.74	73.41	79.43	74.67	75.41	74.06
80以上	48.64	45.62	51.95	44.57	43.13	47.45
計						59.58



男						
投票率(%)						
年齢(才)	水沢	江刺	前沢	胆沢	衣川	計
18~19	46.15	45.00	54.29	42.34	58.97	47.00
20~24	25.66	28.91	38.43	38.14	35.09	29.51
25~29	32.94	35.87	49.10	45.00	32.14	36.12
30~34	39.94	41.79	43.17	45.32	38.67	41.21
35~39	42.75	44.18	45.67	49.01	39.18	44.05
40~44	45.64	50.06	57.47	52.08	60.44	49.26
45~49	52.84	56.09	60.90	62.40	61.06	55.87
50~54	58.26	61.53	65.85	66.21	70.33	60.99
55~59	65.31	70.30	72.68	71.33	64.37	67.99
60~64	68.50	70.70	76.58	74.90	79.41	71.21
65~69	74.24	73.67	78.99	79.50	82.56	75.84
70~74	71.96	76.55	79.83	78.79	73.20	75.21
75~79	74.79	73.73	82.71	80.56	77.69	76.38
80以上	60.10	58.27	64.39	58.63	56.28	59.79
計						59.82



女						
投票率(%)						
年齢(才)	水沢	江刺	前沢	胆沢	衣川	計
18~19	42.96	49.74	51.46	49.12	38.10	46.26
20~24	32.61	35.66	43.68	45.59	41.03	35.95
25~29	39.66	44.79	50.00	48.00	42.86	42.69
30~34	45.49	52.63	53.37	49.79	65.45	48.77
35~39	49.46	55.46	55.09	58.15	50.00	52.57
40~44	51.00	55.06	63.64	58.08	56.63	54.42
45~49	55.40	62.24	70.70	66.43	74.26	60.32
50~54	60.99	68.01	70.03	67.93	74.68	64.51
55~59	65.81	72.94	75.87	76.80	76.19	70.11
60~64	71.34	76.28	79.68	79.25	75.51	74.75
65~69	72.12	76.49	84.12	79.29	80.29	76.12
70~74	74.65	74.90	83.42	80.54	80.81	76.79
75~79	71.20	73.10	76.51	69.47	73.17	72.10
80以上	42.57	38.85	45.14	37.64	36.25	40.93
計						59.36



年代別投票率比較

(単位:%)

奥州市全域	R元.9.8知事県議選			R3.10.31衆院選			R4.3.6市長選			R4.7.10参院選			R5.9.知事県議選		
	年代	男	女	計	男	女	計	男	女	計	男	女	計	男	女
18～19	43.26	44.92	44.06	48.14	48.64	48.39	44.15	46.36	45.22	34.35	32.94	33.67	47.00	46.26	46.64
20～24	27.74	35.29	31.30	35.65	39.89	37.67	27.23	32.62	29.81	29.67	32.68	31.13	29.51	35.95	32.56
25～29	34.21	44.05	38.84	42.37	47.74	44.85	31.48	36.24	33.67	39.15	42.58	40.73	36.12	42.69	39.12
30～34	42.02	46.79	44.23	48.34	53.83	50.89	37.30	44.30	40.54	43.01	47.06	44.90	41.21	48.77	44.76
35～39	44.59	48.50	46.44	51.11	56.02	53.41	41.22	49.00	44.86	44.53	47.99	46.14	44.05	52.57	47.96
40～44	51.07	54.98	52.93	56.37	61.01	58.56	48.00	53.10	50.42	50.11	50.96	50.51	49.26	54.42	51.72
45～49	56.56	60.04	58.19	61.69	63.60	62.59	51.25	58.60	54.74	53.88	55.99	54.88	55.87	60.32	57.98
50～54	65.17	68.07	66.60	69.19	69.34	69.26	57.88	61.37	59.58	59.43	59.87	59.64	60.99	64.51	62.66
55～59	69.20	72.71	70.95	73.59	76.17	74.86	63.54	68.91	66.17	64.32	67.55	65.91	67.99	70.11	69.05
60～64	72.95	76.47	74.69	76.27	77.92	77.09	68.16	72.82	70.49	67.16	68.85	68.01	71.21	74.75	72.99
65～69	76.72	78.33	77.52	78.17	78.21	78.19	72.98	74.74	73.86	70.38	69.77	70.07	75.84	76.12	75.98
70～74	78.74	78.50	78.62	79.53	77.92	78.70	73.32	73.70	73.52	70.49	68.97	69.71	75.21	76.79	76.02
75～79	79.09	75.30	76.92	79.29	73.55	76.08	74.23	69.99	71.88	72.29	64.58	68.06	76.38	72.10	74.06
80以上	62.60	42.89	49.68	63.28	42.74	49.82	56.87	38.27	44.68	53.95	34.71	41.35	59.79	40.93	47.45
奥州市全域計	60.77	60.52	60.64	64.70	62.44	63.53	56.56	56.73	56.65	56.81	53.89	55.30	59.82	59.36	59.58
水 沢	男	女	計	男	女	計	男	女	計	男	女	計	男	女	計
18～19	40.20	41.30	40.75	45.79	44.87	45.33	39.71	44.42	42.02	34.87	30.02	32.53	46.15	42.96	44.57
20～24	25.67	30.63	28.04	34.75	39.02	36.84	24.40	30.06	27.16	28.08	30.55	29.30	25.66	32.61	29.04
25～29	30.76	39.41	34.90	39.87	46.15	42.82	30.24	34.13	32.05	36.24	40.61	38.27	32.94	39.66	36.01
30～34	38.27	42.63	40.35	48.12	51.34	49.64	35.05	41.16	37.92	43.26	45.84	44.47	39.94	45.49	42.58
35～39	41.75	43.54	42.62	49.14	53.07	51.04	38.79	45.94	42.24	43.98	45.74	44.83	42.75	49.46	45.90
40～44	45.45	48.65	46.97	54.58	57.34	55.90	45.21	50.81	47.88	48.32	50.15	49.19	45.64	51.00	48.25
45～49	52.81	54.93	53.84	59.37	60.20	59.77	48.98	55.26	52.03	53.56	53.40	53.48	52.84	55.40	54.07
50～54	61.82	62.70	62.26	68.90	66.63	67.77	55.56	58.88	57.21	58.70	57.92	58.31	58.26	60.99	59.58
55～59	66.82	68.02	67.41	71.44	74.44	72.89	60.43	65.95	63.11	62.41	65.42	63.88	65.31	65.81	65.56
60～64	69.02	71.04	70.03	75.51	75.66	75.59	65.71	69.57	67.64	66.91	68.11	67.51	68.50	71.34	69.93
65～69	73.13	74.97	74.08	77.47	75.85	76.63	69.70	70.97	70.35	71.27	68.43	69.82	74.24	72.12	73.17
70～74	75.56	76.88	76.29	78.22	77.39	77.76	70.15	72.20	71.27	69.92	70.01	69.97	71.96	74.65	73.40
75～79	79.88	74.42	76.72	79.26	75.04	76.85	74.45	69.20	71.44	72.80	67.30	69.67	74.79	71.20	72.74
80以上	62.82	43.34	49.90	64.77	46.73	52.96	57.10	41.59	46.97	56.17	39.11	45.01	60.10	42.57	48.64
水沢 計	56.86	57.02	56.95	62.84	61.54	62.16	53.36	55.09	54.26	55.66	53.87	54.73	56.62	56.91	56.77

年代別投票率比較

(単位:%)

奥州市全域	R元.9.8知事県議選			R3.10.31衆院選			R4.3.6市長選			R4.7.10参院選			R5.9.知事県議選		
江刺	男	女	計	男	女	計	男	女	計	男	女	計	男	女	計
18～19	42.02	44.60	43.24	45.23	46.86	46.06	41.95	40.29	41.12	30.05	34.27	32.21	45.00	49.74	47.45
20～24	29.76	43.16	35.88	31.14	37.91	34.26	25.16	33.64	29.18	29.03	32.46	30.66	28.91	35.66	32.11
25～29	32.66	45.34	38.40	44.35	48.25	46.11	29.26	37.28	32.91	43.22	46.38	44.67	35.87	44.79	39.93
30～34	42.55	48.16	45.09	45.11	57.29	50.51	35.54	47.99	41.09	37.95	48.53	42.70	41.79	52.63	46.71
35～39	46.03	49.35	47.56	53.19	58.31	55.50	42.11	47.32	44.44	45.04	47.78	46.26	44.18	55.46	49.26
40～44	54.92	59.60	57.09	56.40	62.30	59.12	47.60	49.32	48.40	48.83	49.21	49.01	50.06	55.06	52.36
45～49	55.63	64.82	59.58	61.36	64.04	62.55	48.76	59.57	53.61	52.68	56.69	54.50	56.09	62.24	58.95
50～54	66.49	72.40	69.42	69.65	72.18	70.85	57.36	62.91	59.95	59.63	62.46	60.93	61.53	68.01	64.38
55～59	69.96	73.37	71.65	76.94	76.32	76.63	66.49	69.61	68.08	67.24	69.10	68.19	70.30	72.94	71.65
60～64	73.59	78.22	75.83	75.93	78.83	77.37	66.90	72.51	69.67	67.61	69.82	68.71	70.70	76.28	73.48
65～69	77.52	78.95	78.21	77.99	78.64	78.30	73.39	75.75	74.54	68.59	68.99	68.79	73.67	76.49	75.03
70～74	78.91	78.04	78.49	79.81	78.34	79.10	73.95	72.74	73.37	70.65	65.84	68.34	76.55	74.90	75.72
75～79	75.79	73.12	74.31	78.63	72.99	75.56	71.62	69.58	70.53	72.82	63.24	67.75	73.73	73.10	73.41
80以上	59.79	40.88	47.52	61.64	39.53	47.19	55.96	34.67	42.03	52.76	31.62	38.88	58.27	38.85	45.62
江刺計	61.55	61.18	61.36	65.01	61.97	63.46	56.61	55.60	56.10	56.96	52.81	54.84	60.14	59.63	59.88
前沢	男	女	計	男	女	計	男	女	計	男	女	計	男	女	計
18～19	54.46	56.70	55.50	61.54	60.82	61.21	57.98	57.43	57.73	42.15	39.22	40.81	54.29	51.46	52.88
20～24	31.18	44.33	38.05	45.50	45.00	45.26	39.21	38.73	38.98	36.67	39.91	38.21	38.43	43.68	40.69
25～29	49.12	57.43	53.02	50.79	51.89	51.33	38.46	38.51	38.48	46.24	46.11	46.18	49.10	50.00	49.56
30～34	49.36	52.81	50.83	52.55	59.73	55.88	42.91	51.58	47.01	48.40	47.86	48.14	43.17	53.37	48.05
35～39	48.92	59.88	54.12	52.79	61.20	56.62	45.17	54.98	49.61	43.33	53.38	47.87	45.67	55.09	49.83
40～44	61.44	66.04	63.68	61.73	68.90	65.23	55.39	59.89	57.57	57.22	55.59	56.43	57.47	63.64	60.47
45～49	64.09	71.67	67.83	68.35	72.97	70.62	58.21	65.09	61.61	55.04	62.50	58.62	60.90	70.70	65.52
50～54	74.48	76.67	75.49	69.33	76.06	72.42	62.57	67.87	65.09	63.38	64.22	63.79	65.85	70.03	67.91
55～59	73.47	81.99	77.71	71.98	80.95	76.55	66.22	75.21	70.61	66.67	71.15	68.83	72.68	75.87	74.20
60～64	78.78	87.79	83.12	77.10	80.68	78.82	74.95	79.50	77.19	67.99	68.55	68.26	76.58	79.68	78.15
65～69	81.59	83.30	82.42	79.29	83.02	81.11	76.98	79.92	78.40	73.50	75.00	74.24	78.99	84.12	81.44
70～74	85.84	86.65	86.25	81.96	82.14	82.05	80.65	81.39	81.02	74.39	74.75	74.57	79.83	83.42	81.61
75～79	85.05	81.17	82.83	81.32	75.51	78.14	79.27	77.52	78.35	72.56	65.97	69.11	82.71	76.51	79.43
80以上	68.97	49.75	56.58	67.44	44.74	52.69	62.07	41.50	48.71	57.83	36.37	43.93	64.39	45.14	51.95
前沢計	68.88	69.39	69.14	68.88	67.15	67.99	63.72	62.88	63.28	60.88	57.57	59.18	66.02	65.52	65.76

年代別投票率比較

(単位:%)

奥州市全域	R元.9.8知事県議選			R3.10.31衆院選			R4.3.6市長選			R4.7.10参院選			R5.9.知事県議選		
胆沢	男	女	計	男	女	計	男	女	計	男	女	計	男	女	計
18～19	48.06	51.72	49.80	46.15	57.50	51.60	46.62	57.50	51.78	27.61	36.59	31.91	42.34	49.12	45.78
20～24	31.58	35.45	33.33	40.56	42.73	41.60	32.50	37.73	35.00	31.17	37.18	34.10	38.14	45.59	41.59
25～29	41.73	51.01	46.20	44.72	52.88	48.46	35.17	40.41	37.53	40.08	43.68	41.67	45.00	48.00	46.33
30～34	49.11	56.95	52.82	53.05	53.00	53.03	43.23	43.22	43.22	47.68	47.91	47.79	45.32	49.79	47.45
35～39	48.97	57.58	52.88	52.02	59.57	55.57	43.80	57.53	50.36	46.22	51.82	48.86	49.01	58.15	53.30
40～44	59.39	61.50	60.42	59.47	65.52	62.34	50.90	60.05	55.24	52.19	52.02	52.11	52.08	58.08	54.91
45～49	67.72	64.82	66.40	65.77	67.95	66.77	56.27	61.72	58.77	55.19	58.33	56.63	62.40	66.43	64.25
50～54	68.84	77.11	72.72	70.02	71.32	70.65	62.50	63.94	63.20	57.00	58.97	57.97	66.21	67.93	67.03
55～59	73.49	80.75	77.16	76.79	78.74	77.74	66.07	72.48	69.12	65.56	68.23	66.82	71.33	76.80	73.91
60～64	76.55	81.04	78.80	76.60	82.73	79.62	70.80	76.79	73.78	65.94	70.11	68.03	74.90	79.25	77.13
65～69	82.59	83.62	83.11	80.03	79.62	79.82	76.23	77.32	76.80	68.54	69.80	69.19	79.50	79.29	79.39
70～74	82.97	79.60	81.30	80.52	75.82	78.21	75.04	73.47	74.26	68.23	65.75	67.00	78.79	80.54	79.68
75～79	79.68	77.31	78.27	78.81	67.90	72.64	72.01	64.61	67.99	68.67	55.53	61.49	80.56	69.47	74.67
80以上	62.65	41.71	49.04	59.72	37.46	44.98	51.94	32.42	38.99	45.79	27.44	33.71	58.63	37.64	44.57
胆沢計	66.29	64.96	65.60	66.82	62.83	64.75	59.60	57.84	58.69	56.30	52.36	54.26	64.66	62.00	63.28
衣川	男	女	計	男	女	計	男	女	計	男	女	計	男	女	計
18～19	40.63	41.67	41.07	59.38	44.00	52.63	62.50	31.82	50.00	48.72	35.00	44.07	58.97	38.10	51.67
20～24	23.38	26.67	24.59	33.33	43.24	37.11	30.51	30.30	30.43	31.15	28.21	30.00	35.09	41.03	37.50
25～29	30.56	53.06	39.67	41.67	38.71	40.78	37.31	54.84	42.86	41.18	34.38	39.00	32.14	42.86	35.71
30～34	43.30	46.58	44.71	44.74	59.65	51.13	48.68	58.49	52.71	41.10	53.45	46.56	38.67	65.45	50.00
35～39	44.57	49.35	46.75	54.64	54.79	54.71	47.31	60.00	52.76	46.94	54.55	50.00	39.18	50.00	43.23
40～44	48.25	61.17	54.38	54.13	65.59	59.41	59.43	67.42	63.08	57.29	58.02	57.63	60.44	56.63	58.62
45～49	58.59	62.92	60.64	65.71	72.16	68.81	67.29	78.00	72.46	59.46	66.67	62.91	61.06	74.26	67.29
50～54	60.98	66.33	63.89	66.27	68.24	67.26	71.79	65.33	68.63	68.67	67.53	68.13	70.33	74.68	72.35
55～59	65.91	69.92	67.92	75.89	74.78	75.33	72.17	73.68	72.93	61.32	74.11	67.89	64.37	76.19	70.83
60～64	77.73	73.58	75.65	83.13	73.74	78.17	74.13	77.05	75.77	69.23	68.00	68.55	79.41	75.51	77.39
65～69	72.77	78.53	75.38	76.89	81.77	79.21	79.44	84.18	81.71	69.38	73.04	71.19	82.56	80.29	81.39
70～74	76.26	74.15	75.17	80.33	76.47	78.47	73.68	75.76	74.65	71.81	69.23	70.64	73.20	80.81	76.78
75～79	71.17	73.60	72.46	78.79	70.64	74.52	79.05	77.06	78.04	74.11	64.41	69.13	77.69	73.17	75.41
80以上	59.81	36.18	43.98	58.33	36.05	43.50	61.50	38.84	46.35	54.63	29.95	38.28	56.28	36.25	43.13
衣川計	60.42	58.79	59.58	66.27	61.37	63.77	65.58	63.47	64.50	60.20	55.59	57.85	63.69	62.45	63.06

