

Cattle Museum

牛の博物館



Maesawa, Iwate

“The earliest encounters between man and cattle” date back as far as 8,000 years ago, when prehistoric man captured wild ancestors of today’s cattle and began domesticating them. Since then a rich history has developed between us. Throughout this period, great wealth has been acquired from cattle. However, do we really know enough about cattle? The Cattle Museum: “To promote a better understanding of nature, life, and ourselves with respect to the co-existence of man and cattle” will tell you a lot about the world of cattle.

The Town of Maesawa’s Cattle Museum was established to explore the relationship between man and cattle from a global perspective that considers the relationship as a culture. Cattle are examined from a biological point of view, as a natural science and from an anthropological point of view to explain this relationship. All displays are carefully chosen valuable archives, collected from both inside Japan and overseas. Young and old visitors will learn more about cattle as they enjoy the displays. The Cattle Museum is suited to the Town of Maesawa, uniquely referred to as, “the home of cattle”.

Displays

“To promote a better understanding of nature, life, and ourselves with respect to the co-existence of man and cattle” displays are arranged so that visitors can circulate and learn freely. Permanent displays highlighting the understanding of cattle from a biological point of view, learning about the relationship between man and cattle, and comprehending the Town of Maesawa are available as well as special planned events.

Learning Assistance

The Audio-visual corner is provided for individual learning through interactive video terminals. Dr. Cattle will ask you questions from three different levels. This is done through an easy to use touch panel. Using the same system, you can search for up to 700 different items of cattle information. Original videos produced by the museum are also on show.

Research and Study

Research and study on cattle is carried out from various aspects on a continuous basis. The result of this research is not only reflected in the form of the displays to be seen by young and old visitors and outside researchers, but also through seminars on the study of cattle that are also on the planning board.

Artifacts and collections

Artifacts and collections stored in this museum were gathered from within Japan and also from overseas. Three thousands artifacts and collections were counted at the time of opening this museum. Six hundred items were carefully selected for display. Among them are academically precious items that you will not see anywhere else.

Bison Fossils

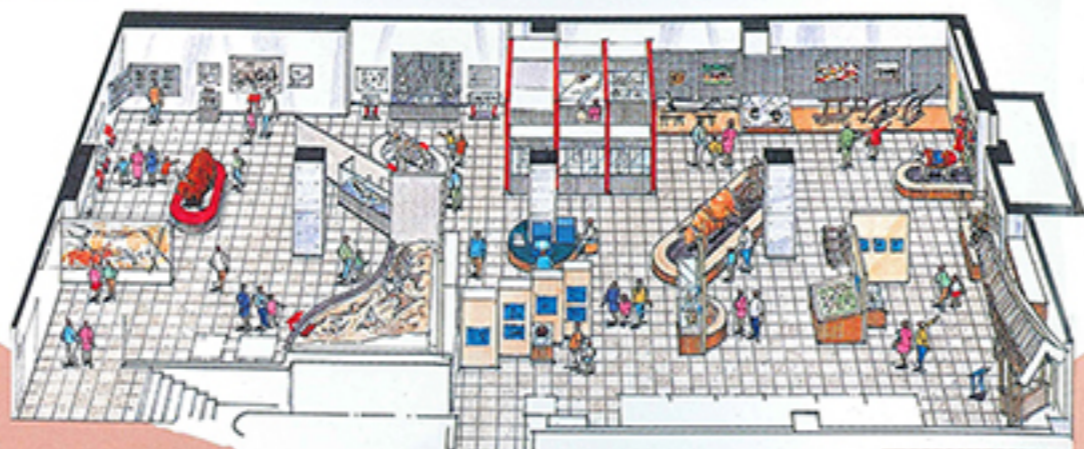
Whole bones of fossil skeleton and bison skulls from the latter 4th Pleistocene Period excavated on the Eurasian continent and North American continent.



2F

The Relationship of People and Cattle Around the World

The biological aspects of cattle and their relationship with people are shown through precious artifacts and collections, and other materials.



Cattle Designs Featured on Coins



- 1 Hong Kong \$1000.(1985)
- 2 Vatican, 1/2 Scudo silver coin (1690)
- 3 Ancient Greece, Triobol silver coin (B.C.460~430)
- 4 Imperial Rome, AEI Bronze coin (A.D.360~363)
- 5 Kushan Dynasty, Stater gold coin (A.D.195~230)

Ten Famous Cattle Breeds in Japan (replica)

Late Kamakura era (1310)
Out of ten famous breeding regions in Japan, ten cattle are depicted on the scroll and each special feature is included in detail. This scroll is a copy of the original work by Fujiwara Teikan in the 7th year of the Anei Period (1778). Pictures of nine of the ten cattle are actually shown.



Display Corner

The Evolution of Cattle; Breeds of Cattle; Bovine Anatomy; Use in Cultivation, Transportation, and Worship; The Relationship Between People and Cattle Around the World; Toys etc.



Highland Cattle, Stuffed Specimen

Origin: Scotland. This small bodied breed provides meat, is resistant to cold and is covered with long reddish brown hair. It is said to carry features of extinct Aurochs, the ancestor of present day cattle.

Bego(Cattle)

A traditional toy made of wood.



True Type Breeds

Models of true type breeds from European countries are on display. These models demonstrate optimum body shape and other criteria of a true type animal.



1F

Town of Maesawa and the History of Maesawa Cattle



Culinary Arts, the Origin of Maesawa Cattle, History, Nature, and Lifestyle

Display Corner

- Glorious Maesawa Cattle
- Image of the time when Maesawa was under the sea
- Videos



Stuffed Specimen of Maesawa Cattle

The Maesawa cattle, which in the beef industry have been considered a fine art, were bred using bulls of the Tajima strain and cows of the Simane strain. They retain an ideal form as beef cattle.



Bovine Stomach

This stomach specimen was preserved by using a higher alcohol. Interior structures of the four divisions of the stomach can be viewed.

Cattle Related Folk Material

Extensive folk material collected from Japan and overseas reveal much about the relationship between people and cattle.



House of Toraja Tribe

Toraja people of Sulawesi Island, Indonesia have strong religious ties to water buffalo. All of their houses called "Tongkonan" are decorated with head sculptures and buffalo horns.



Latifrons Bison Fossil Skull (replica)



This late 4th Pleistocene period bison measuring 2.2 metres, excavated in the USA, had the largest body of all bovine animals.

Museum Theatre

"In search of the bond between Man and Cattle" the original video made by the museum is shown on a 60 inch big screen monitor.

Museum Library

The library and reference room are located on the main floor for further study.

Souvenir Shop

Special souvenir items and unique museum goods from the land of Maesawa are available.

Restaurant

Maesawa beef, the King of Beef. Experience the delicious succulent beef dishes first-hand in the restaurant.